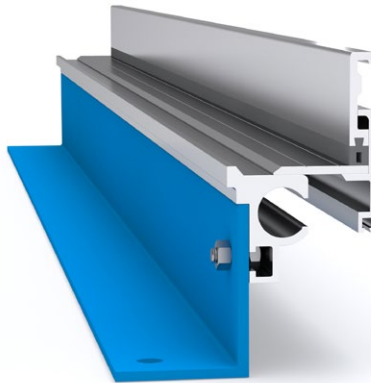
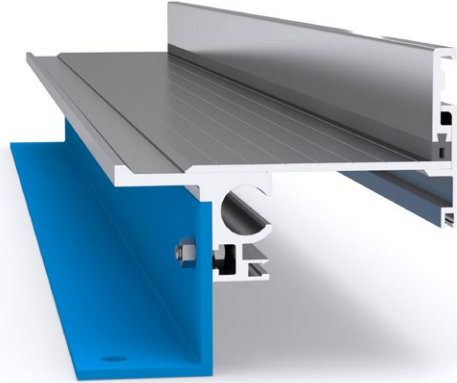


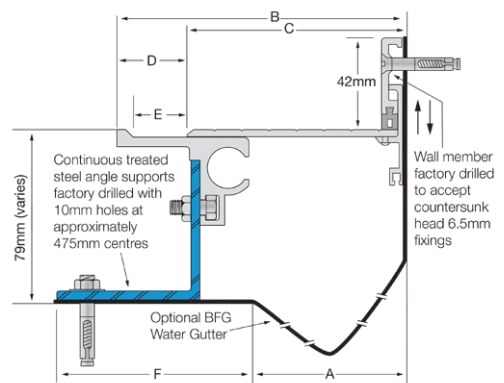
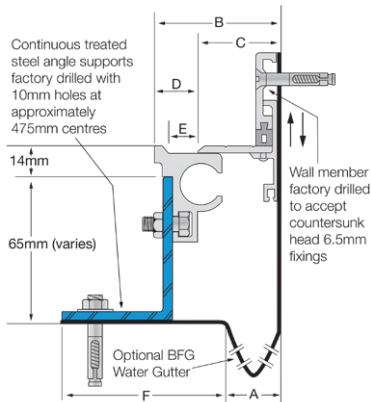
# Latham Ultimate Series Aluminium Expansion Joint Cover SLA (SSSM ▲)



SLA-25 (SSSM ▲) to SLA-50 (SSSM ▲)



SLA-44 (SSSM ▲) to SLA-150 (SSSM ▲)



Aluminium Code ribbed deck	A	B	C	D	E	F	Movement	Total Available Movement	Overall Depth	Cover Plate Thickness
SLA-25 (SSSM ▲)	25	56	38	18	13	•	+/-12mm	24mm	Specify	3mm
SLA-50 (SSSM ▲)	50	81	63	18	13	•	+/-12mm	24mm	Specify	3mm
SLA-44 (SSSM ▲)	44	110	78	32	26	•	+/-25mm	50mm	Specify	3mm
SLA-75 (SSSM ▲)	70	132	100	32	26	•	+/-25mm	50mm	Specify	3mm
SLA-100 (SSSM ▲)	95	157	125	32	26	•	+/-25mm	50mm	Specify	3mm
SLA-150 (SSSM ▲)	145	217	175	32	26	•	+/-25mm	50mm	Specify	5mm

▲ Specify required depth: 45mm, 55mm, 70mm, 80mm, 95mm, 105mm, 130mm & 155mm

• "F" distance subject to required depth



## FEATURES

- Aluminium floor-to-wall expansion joint cover.
- Robust system suited to pedestrian applications.
- Aluminium side member is installed on a continuous treated steel support, to allow for a variable floor depth below the finished floor (▲ - specify depth)
- Generally installed with paver/deep bed applications.

## MATERIALS

- Aluminium 6063-T5 mill finish alloy.
- Treated steel angle supports.
- Supplied in 3050mm lengths.

## FIXINGS

- Continuous treated steel support angles pre-drilled at ~475mm centres for 10mm fasteners.
- Wall member pre-drilled at ~475mm centres to accept countersunk head 6.5mm fixings.

## FURTHER TECHNICAL SPECIFICATIONS

- [Website Link - PDF and DWG Details](#)
- [Product Information](#)
- [Joint Specifications](#)
- [Fire Rated Systems](#)
- [Full Product Catalogue](#)
- [Architectural Specifications](#)
- [Warranty](#)



multi directional  
6-way movement



indoor & out-  
door use



BFG water  
gutter



fire rated (joint  
widths >50mm)



factory  
curvable