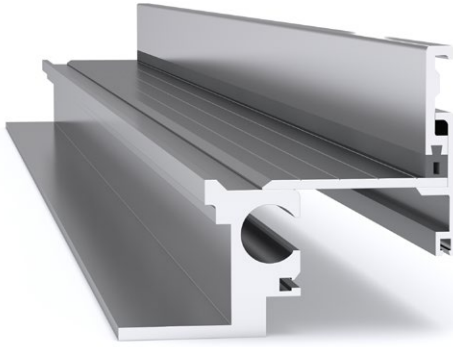
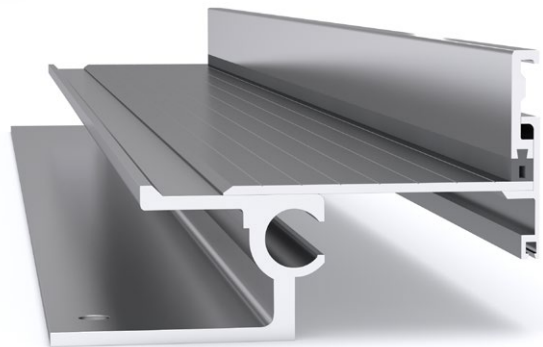


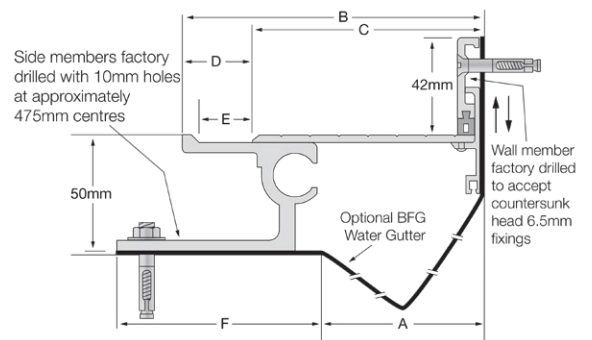
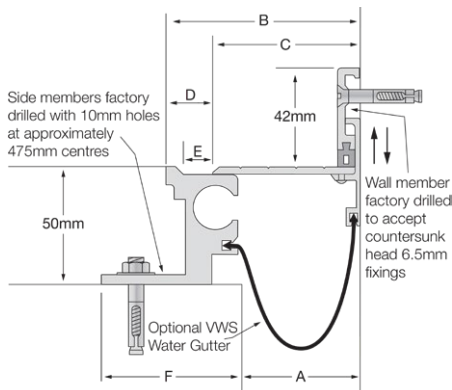
Latham Ultimate Series Aluminium Expansion Joint Cover SLA (FASM 50)



SLA-25 (FASM 50) to SLA-50 (FASM 50)



SLA-44 (FASM 50) to SLA-150 (FASM 50)



Aluminium Code ribbed deck	A	B	C	D	E	F	Movement	Total Available Movement	Overall Depth	Cover Plate Thickness
SLA-25 (FASM 50)	25	58	38	18	13	60	+/-12mm	25mm	50mm	3mm
SLA-50 (FASM 50)	50	81	63	18	13	60	+/-12mm	25mm	50mm	3mm
SLA-44 (FASM 50)	44	99	72	32	26	87	+/-25mm	50mm	50mm	3mm
SLA-75 (FASM 50)	70	125	98	32	26	87	+/-25mm	50mm	50mm	4mm
SLA-100 (FASM 50)	95	150	123	32	26	87	+/-25mm	50mm	50mm	4mm
SLA-125 (FASM 50)*	120	175	148	32	26	87	+/-25mm	50mm	50mm	5mm
SLA-150 (FASM 50)*	145	200	173	32	26	87	+/-25mm	50mm	50mm	5mm

*Denotes smooth cover plate.



FEATURES

- Aluminium floor-to-wall expansion joint cover.
- Robust system suited to pedestrian applications.
- 50mm depth below floor finish.
- 42mm vertical depth up the wall, above floor finish.
- Installed with terrazzo tiles, pavers, timber, stone, etc.

MATERIALS

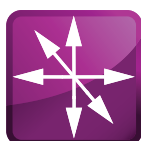
- Aluminium 6063-T5 mill finish alloy.
- Supplied in 3050mm lengths.

FIXINGS

- Side member pre-drilled at ~475mm centres for 10mm fasteners.
- Wall member pre-drilled at ~475mm centres to accept countersunk head 6.5mm fixings.

FURTHER TECHNICAL SPECIFICATIONS

- [Website Link - PDF and DWG Details](#)
- [Product Information](#)
- [Joint Specifications](#)
- [Fire Rated Systems](#)
- [Full Product Catalogue](#)
- [Architectural Specifications](#)
- [Warranty](#)



multi directional
6-way movement



indoor & out-
door use



VWS water
gutter



fire rated (joint
widths >50mm)