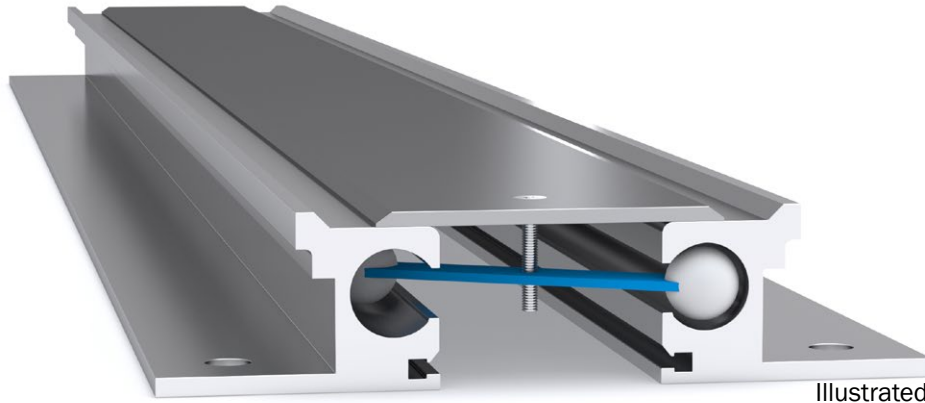
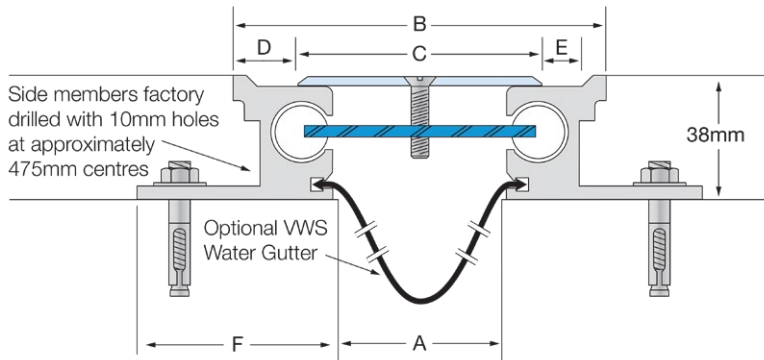


Latham Ultimate Series Aluminium Expansion Joint Cover with Stainless Steel Cover Plate SAS (FASM 38)



Illustrated: SAS-50 (FASM 38)



Stainless Steel Code smooth deck	A	B	C	D	E	F	Movement	Total Available Movement	Overall Depth	Cover Plate Thickness
SAS-25 (FASM 38)	25	87	50	18	13	60	+20/-15mm	35mm	38mm	3mm
SAS-50 (FASM 38)	50	113	75	18	13	60	+20/-25mm	45mm	38mm	3mm
SAS-75 (FASM 38)	75	137	100	18	13	60	+20/-25mm	45mm	38mm	3mm

FEATURES

- Aluminium floor expansion joint cover with a stainless steel cover plate.
- Robust system suited to pedestrian applications.
- 38mm depth below floor finish.
- Installed with terrazzo tiles, pavers, timber, stone, etc.

MATERIALS

- Aluminium 6063-T5 mill finish alloy.
- 304 Grade, 2B finish stainless steel cover plates.
- Supplied in 3050mm lengths.
- Spring steel treated centering bar with nylon spherical balls (at ~475mm centres).

FIXINGS

- Side member pre-drilled at ~475mm centres for 10mm fasteners.

FURTHER TECHNICAL SPECIFICATIONS

- [Website Link - PDF and DWG Details](#)
- [Product Information](#)
- [Joint Specifications](#)
- [Fire Rated Systems](#)
- [Full Product Catalogue](#)
- [Architectural Specifications](#)
- [Warranty](#)



multi directional
6-way movement



indoor & out-
door use



VWS water
gutter



fire rated (joint
widths >50mm)