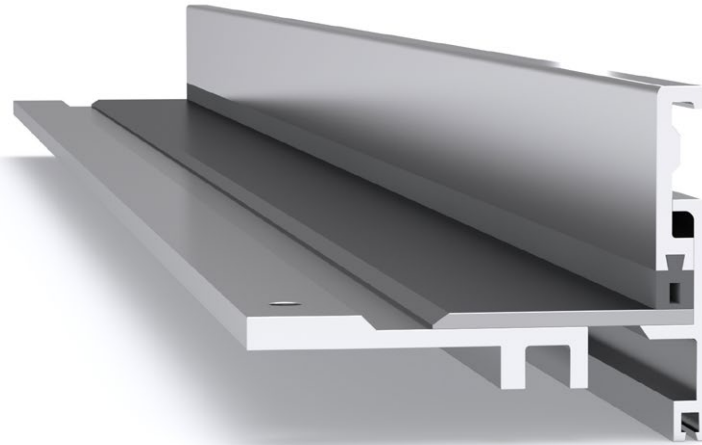
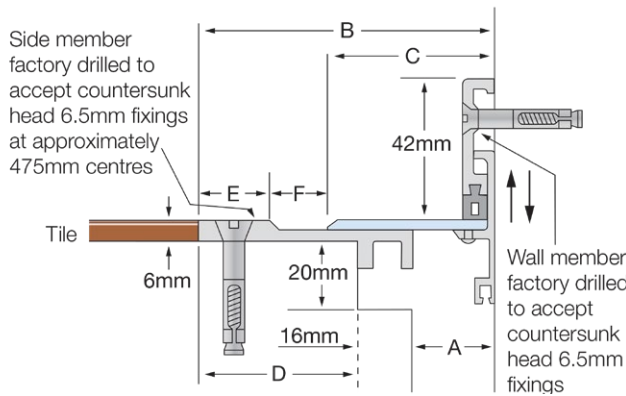


Latham Surface-Line Series Aluminium Expansion Joint Cover with Stainless Steel Cover Plate FXSL



Illustrated: FXSL-25



| Stainless Steel Code smooth deck | A | B | C | D | E | F | Movement | Total Available Movement | Overall Depth | Cover Plate Thickness |
|-------------------------------------|-----|-----|-----|----|----|----|-----------|--------------------------|-----------------|-----------------------|
| FXSL-25 | 25 | 87 | 50 | 46 | 20 | 18 | +20/-15mm | 35mm | Surface Mounted | 3mm |
| FXSL-50 | 50 | 112 | 75 | 46 | 20 | 18 | +20/-15mm | 35mm | Surface Mounted | 3mm |
| FXSL-75 | 75 | 137 | 100 | 46 | 20 | 18 | +20/-15mm | 35mm | Surface Mounted | 3mm |
| FXSL-100 | 100 | 162 | 125 | 46 | 20 | 18 | +20/-15mm | 35mm | Surface Mounted | 3mm |
| FXSL-150 | 150 | 212 | 175 | 46 | 20 | 18 | +20/-15mm | 35mm | Surface Mounted | 4mm |

FEATURES

- Aluminium floor-to-wall expansion joint cover with a stainless steel cover plate.
- Designed to finish flush with the surrounding floor finish (can be suitably packed up to height if required).
- Installed into a minimal recess, or providing the joint width is 62mm or larger, the system can simply hang over the edge of the slabs and no recess is required.

MATERIALS

- Aluminium 6063-T5 mill finish alloy.
- 304 Grade, 2B finish stainless steel cover plates.
- Supplied in 3050mm lengths.

FIXINGS

- Side and wall members pre-drilled at ~475mm centres to accept countersunk head 6.5mm fixings.
- We recommend Latham Thixotropic Epoxy Adhesive be used in conjunction for superior securing.

FURTHER TECHNICAL SPECIFICATIONS

- [Website Link - PDF and DWG Details](#)
- [Product Information](#)
- [Joint Specifications](#)
- [Fire Rated Systems](#)
- [Full Product Catalogue](#)
- [Architectural Specifications](#)
- [Warranty](#)



multi directional
6-way movement



indoor use



fire rated (joint
widths >50mm)