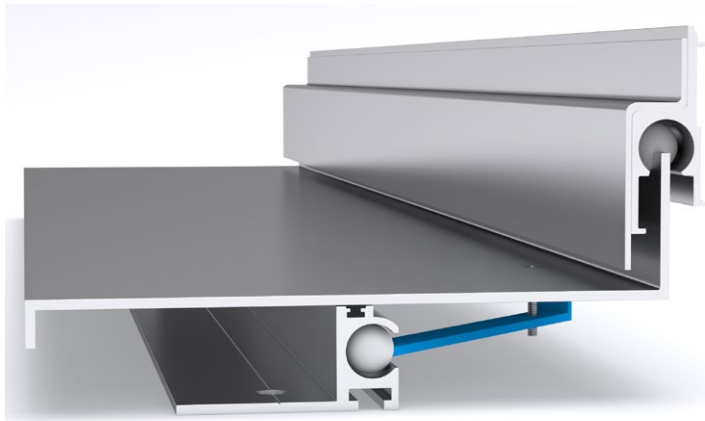
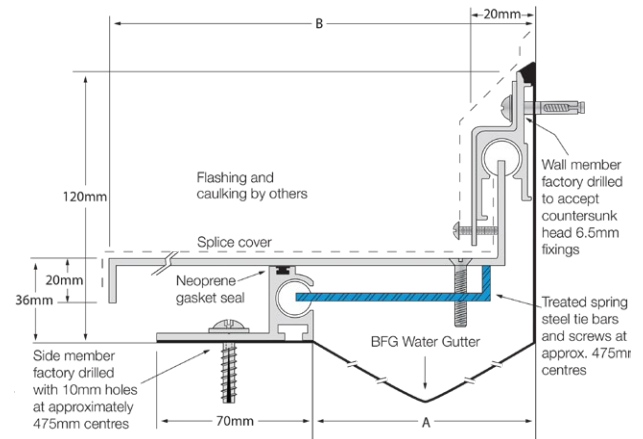


Latham Seismic Series Aluminium Expansion Joint Cover FWLSM



Illustrated: FWLSM-100



Aluminium Code	A	B	Movement	Total Available Movement	Cover Plate Thickness
FWLSM-100	100	233	+100/-75mm	175mm	2.5mm
FWLSM-150	150	333	+150/-125mm	275mm	2.5mm
FWLSM-200	200	433	+200/-175mm	375mm	2.5mm
FWLSM-250	250	533	+250/-225mm	475mm	2.5mm
FWLSM-300	300	633	+300/-275mm	575mm	2.5mm
FWLSM-400	400	833	+400/-375mm	775mm	3mm
FWLSM-500	500	1033	+500/-475mm	975mm	3mm
FWLSM-600	600	1233	+600/-575mm	1175mm	3mm

FEATURES

- Aluminium roof-to-parapet expansion joint cover accommodating both thermal and seismic movement.
- Designed to be surface mounted on slabs or hobs.
- Comes with standard water/wind barrier and top seal gaskets for the centre plate screw.
- Supplied with 1 splice plate per full length for installation over the junction between 2 plates to maintain water tightness.

MATERIALS

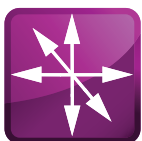
- Aluminium 6063-T5 mill finish alloy.
- Supplied in 3050mm lengths.
- Spring steel treated centering bar with nylon spherical balls (at ~475mm centres).

FIXINGS

- Side member pre-drilled at ~475mm centres for 10mm fasteners.
- Wall member pre-drilled at ~475mm centres to accept countersunk head 6.5mm fixings.
- End Closures, Transition Splices, Corners and Tees should be considered for roof joints. (Contact a Latham representative for more information)

FURTHER TECHNICAL SPECIFICATIONS

- [Website Link - PDF and DWG Details](#)
- [Product Information](#)
- [Joint Specifications](#)
- [Fire Rated Systems](#)
- [Full Product Catalogue](#)
- [Architectural Specifications](#)
- [Warranty](#)



multi directional
6-way movement



outdoor use



BFG water
gutter



fire rated (joint
widths >50mm)



seismic
movement