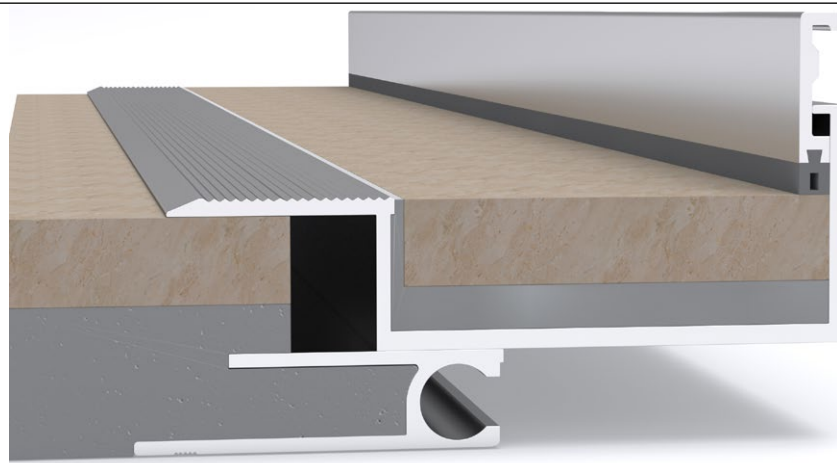
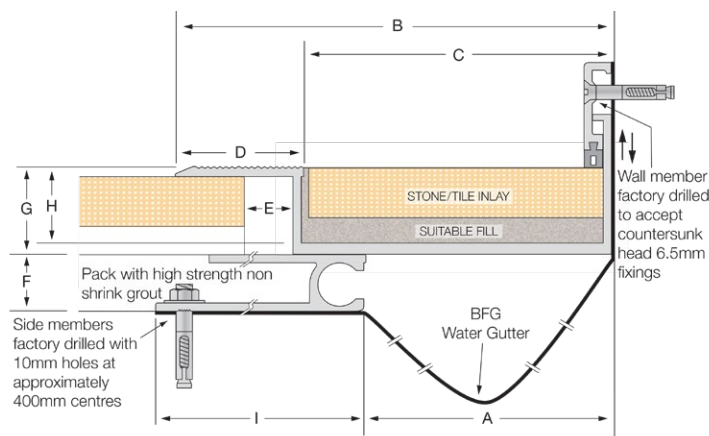


Latham PAVA-Inlay Series Aluminium Expansion Joint Cover ASMPL



Illustrated: ASMPL-50



Aluminium Code	A	B	C	D	E	F	G	H	I	Movement	Total Available Movement	Cover Thickness
ASMPL-25	25	175	125	50	25	22	35	30	93	+/-22mm	44mm	4mm
ASMPL-50	50	175	125	50	25	22	35	30	93	+/-22mm	44mm	4mm
ASMPL-75	75	175	125	50	25	22	35	30	93	+/-22mm	44mm	4mm
ASMPL-100	100	175	125	50	25	22	35	30	93	+/-22mm	44mm	4mm

FEATURES

- Aluminium floor-to-wall expansion joint cover.
- Designed to accommodate 30mm deep tile inlay.
- The tapered edge surface mounted cover plates control the movement in the structure.
- The joint has a serrated top aluminium flange for additional slip resistance.

MATERIALS

- Aluminium 6063-T5 mill finish alloy.
- Supplied in 3050mm lengths.

FIXINGS

- Side member pre-drilled at ~400mm centres for 10mm fasteners.
- Wall member pre-drilled at ~475mm centres to accept countersunk head 6.5mm fixings.
- The tile must be fixed with a suitable bedding agent.

FURTHER TECHNICAL SPECIFICATIONS

- [Website Link - PDF and DWG Details](#)
- [Product Information](#)
- [Joint Specifications](#)
- [Fire Rated Systems](#)
- [Full Product Catalogue](#)
- [Architectural Specifications](#)
- [Warranty](#)



multi directional
6-way movement



indoor & out-
door use



BFG water
gutter



fire rated (joint
widths >50mm)