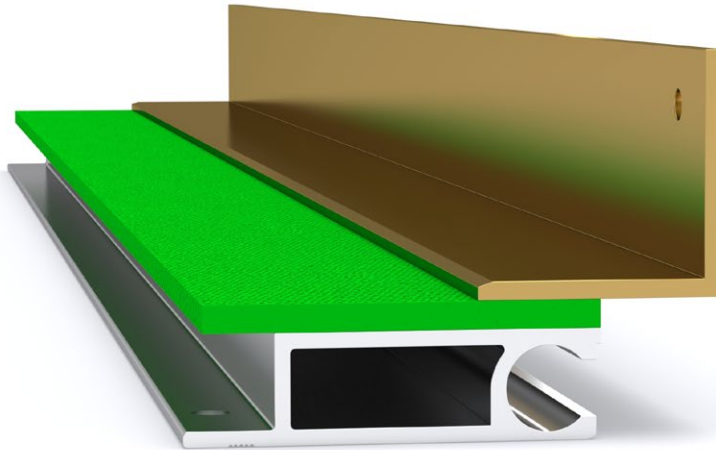
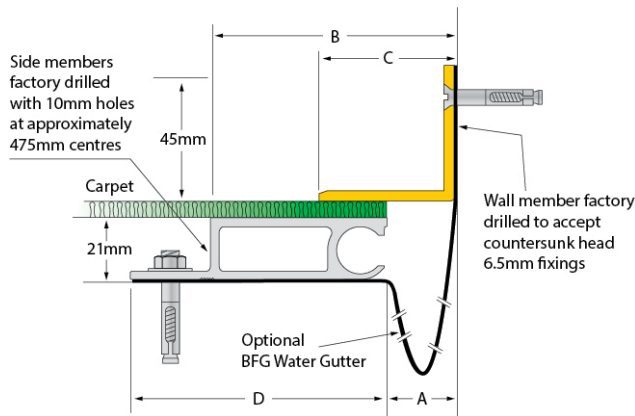


Latham Carpet-Line Series Aluminium Expansion Joint Cover with Brass Cover Plate DRCBL



Illustrated: DRCBL-25



| Brass Code smooth deck | A | B | C | D | Movement | Total Available Movement | Overall Depth | Cover Plate Thickness |
|---------------------------|-----|-----|-----|----|----------|-----------------------------|---------------|--------------------------|
| DRCBL-25 | 25 | 90 | 50 | 93 | +/-12mm | 25mm | 21mm | 3mm |
| DRCBL-50 | 50 | 115 | 75 | 93 | +/-12mm | 25mm | 21mm | 3mm |
| DRCBL-75 | 75 | 140 | 100 | 93 | +/-12mm | 25mm | 21mm | 3mm |
| DRCBL-100 | 100 | 165 | 125 | 93 | +/-12mm | 25mm | 21mm | 3mm |
| DRCBL-150 | 150 | 215 | 175 | 93 | +/-12mm | 25mm | 21mm | 3mm |

FEATURES

- Aluminium floor-to-wall expansion joint cover with a brass cover plate.
- Suited to carpet flooring applications.
- These joint covers should be used in conjunction with carpet and underlay, direct stick carpet or carpet tiles.
- 23mm depth below carpet base.
- Installed in a preformed recess.

MATERIALS

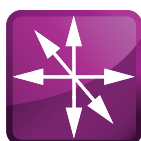
- Aluminium 6063-T5 mill finish alloy.
- Brass 380 mill finish alloy cover plate.
- Supplied in 3050mm lengths (brass cover plates supplied in 4000mm lengths).

FIXINGS

- Side member pre-drilled at ~475mm centres for 10mm fasteners.
- Wall member pre-drilled at ~475mm centres to accept countersunk head 6.5mm fixings.

FURTHER TECHNICAL SPECIFICATIONS

- [Website Link - PDF and DWG Details](#)
- [Product Information](#)
- [Joint Specifications](#)
- [Fire Rated Systems](#)
- [Full Product Catalogue](#)
- [Architectural Specifications](#)
- [Warranty](#)



multi directional
6-way movement



indoor & out-
door use



BFG water
gutter



fire rated (joint
widths >50mm)