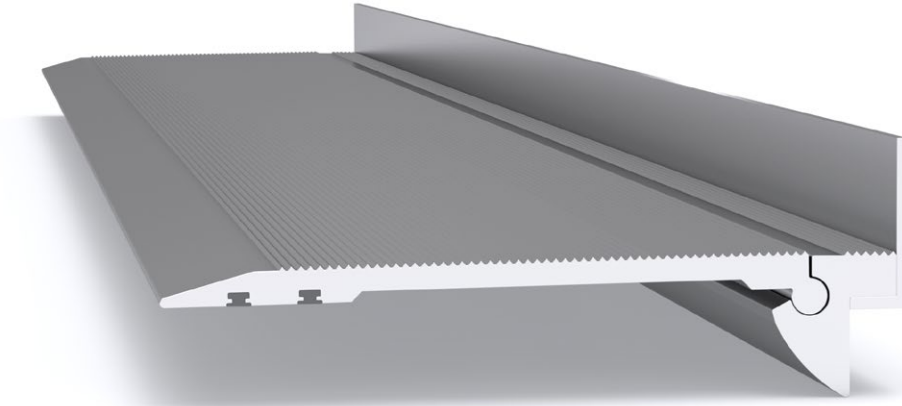
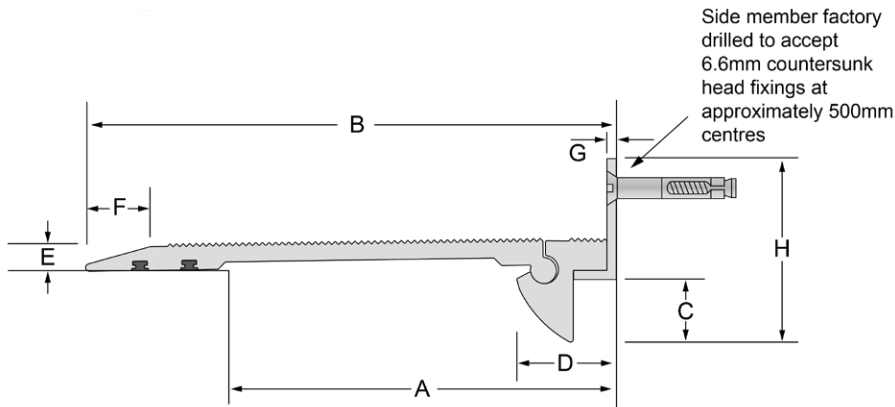


# Latham Car Joint Series Aluminium Expansion Joint Cover CPAL



Illustrated: CPAL-100



Aluminium Code	A	B	C	D	E	F	G	H	Movement	Total Available Movement	Vertical Incline
CPAL-100	35-138	200	24	35	10	25	3	54	35-143mm	108mm	+/-8°

## FEATURES

- Aluminium floor-to-wall expansion joint cover.
- No recess is required, so the CPA-100 is quick and easy to install and assemble. Suitable to pedestrian, trolley, and other car park vehicular traffic.

## MATERIALS

- Aluminium 6063-T5 mill finish alloy.
- Supplied in 3050mm lengths.

## FIXINGS

- Wall member is pre-drilled at ~350mm centres for 6.6mm countersunk head fixings.
- Latham recommend the system is bedded on the

fixing side with a suitable epoxy bedding compound like Titazel Thixotropic Epoxy Adhesive.

## FURTHER TECHNICAL SPECIFICATIONS

- [Website Link - PDF and DWG Details](#)
- [Product Information](#)
- [Joint Specifications](#)
- [Fire Rated Systems](#)
- [Full Product Catalogue](#)
- [Architectural Specifications](#)
- [Warranty](#)



multi directional 6-way movement



indoor & outdoor use



vehicular