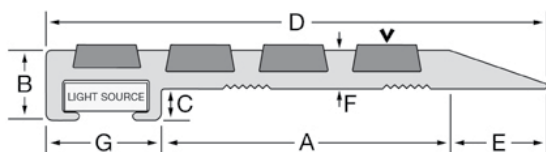
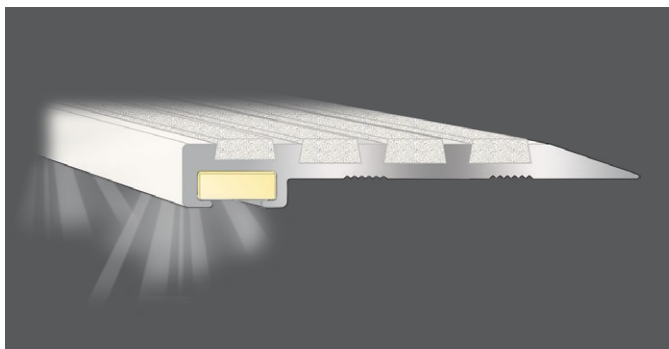


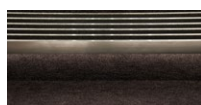
Latham Tredlite 2 Asbraloy™ LED Decorative Safety Stair Tread Nosing Data Sheet

TYPE-FL-AW734ST



'V' Denotes Factory Drilling Location

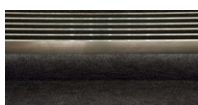
A	B	C	D	E	F	G
42	10	5	75	15	5	17



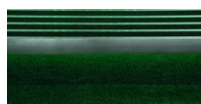
Warm White LED Inserts
(Standard Colour)



Red LED Inserts



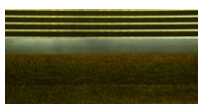
Bright White LED Inserts



Green LED Inserts



Blue LED Inserts



Yellow LED Inserts



ALL WHITE
INFILL



LRV: 45.76

PRODUCT DETAILS - FL-AW734ST

Latham Tredlite Illuminated Slip Resistant Safety Stair Tread Nosings feature the newest safe low voltage 24V LED lighting technology, which is cheap and efficient to run. For most applications all necessary hardware is supplied, including transformers which will simply plug into a power point.

The standard FL lighting system is installed to create a fan light effect over the risers and treads in darkened conditions, providing confidence and safety for negotiating the stairs.

The Latham Super Visual range in All-Black and All-White are specifically designed to meet the requirements of AS1428.1-2009. The All-White should be used with a dark background(step).

FEATURES

- P5 Slip Classification
- Super hard wearing.
- Abrasive Silicon Carbide Mineral Insert
- Luminance Reflective Value (LRV): 45.76
- UV Stable

MATERIALS

Standard Supply: Cut to site required lengths, complete with countersunk holes, stainless steel screws and plastic plugs, or in full 4600mm lengths
Aluminium: 6063-T5, ASTM B221.

Inserts: Suregrip™ Off White Silicon Carbide Mineral Inserts.

Finish: All-White Powdercoated. As the material is cut to length, ends will be mill finish.

COMPLIANCE

- **Wet Slip Test:** Mean British Pendulum (SRV) Classification - **P5**
- **Oil Wet Ramp Test:** Slip Resistant Acceptance Group - **R12**
- Tested to Australian Standard ISO 9239 Reaction to Fire Test for Flooring.

FURTHER TECHNICAL SPECIFICATIONS

- [Website Link - PDF and DWG Details](#)
- [Tredlite 2 Accessories Guide](#)
- [Stair Tread Installation Instructions](#)
- [Luminance Contrast Information](#)
- [Slip Resistant Testing Information](#)
- [Code Compliance Information](#)
- [Colour Range Information](#)
- [Fire Test Information](#)
- [Adhesive Technical Data Sheet](#)
- [Full Product Catalogue](#)
- [Maintenance Guide](#)
- [Photo Gallery](#)
- [Warranty](#)