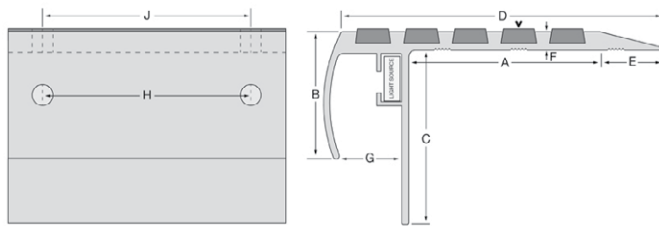
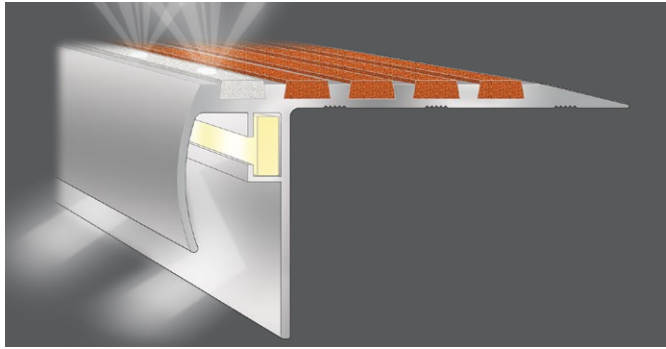


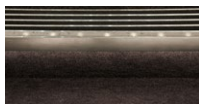
# Latham Tredlite 2 Asbraloy™ LED Decorative Safety Stair Tread Nosing Data Sheet

## TYPE-TOP-1005ST



'V' Denotes Factory Drilling Location

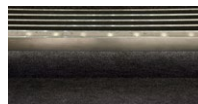
A	B	C	D	E	F	G	H	J
53	37	50	93	18	5	18	-	66



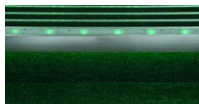
Warm White LED Inserts  
(Standard Colour)



Red LED Inserts



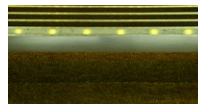
Bright White LED Inserts



Green LED Inserts



Blue LED Inserts



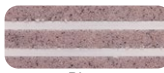
Yellow LED Inserts



Sparkling Black  
(Standard)  
LRV: 28.9



Smoke  
LRV: 41.58



Plum  
LRV: 40.62



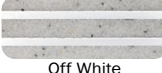
Cactus Green  
LRV: 36.16



Terracotta  
LRV: 34.18



Blue Grey  
LRV: 37.11



Off White  
LRV: 50.17



Teal  
LRV: 31.19



Teak  
LRV: 35.75



Safety Yellow  
LRV: 41.14



Buff  
LRV: 40.81



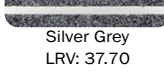
Brown  
LRV: 32.75



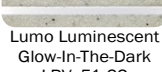
Rose  
LRV: 47.10



Blue  
LRV: 32.01



Silver Grey  
LRV: 37.70



Lumo Luminescent  
Glow-In-The-Dark  
LRV: 51.62

### PRODUCT DETAILS - TOP-1005ST

Latham Tredlite Illuminated Slip Resistant Safety Stair Tread Nosings feature the newest safe low voltage 24V LED lighting technology, which is cheap and efficient to run. For most applications all necessary hardware is supplied, including transformers which will simply plug into a power point.

For the top stair treads, landings and platforms or through-out the staircase, dual purpose Tredlite (TOP) should be considered with the first slip resistant bar in off white colour, designed to emit a low glow lamp effect as well as a fan light effect. The holes are approximately 8mm in diameter and are at approximately 66mm centres.

### FEATURES

- P5 Slip Classification
- Super hard wearing.
- Abrasive Silicon Carbide Mineral Insert
- 16 insert colours available
- Luminance Reflective Value (LRV)
- UV Stable

### MATERIALS

**Standard Supply:** Cut to site required lengths, complete with countersunk holes, stainless steel screws and plastic plugs, or in full 4600mm lengths  
**Aluminium:** 6063-T5, ASTM B221, Mill Finish  
**Inserts:** Suregrip™ Sparkling Black (standard) Silicon Carbide Mineral Inserts, or Supagrit™ Coloured Silicon Carbide Mineral Inserts

### COMPLIANCE

- **Wet Slip Test:** Mean British Pendulum (SRV) Classification - **P5**
- **Oil Wet Ramp Test:** Slip Resistant Acceptance Group - **R12**
- Tested to Australian Standard ISO 9239 Reaction to Fire Test for Flooring.

### FURTHER TECHNICAL SPECIFICATIONS

- [Website Link - PDF and DWG Details](#)
- [Tredlite 2 Accessories Guide](#)
- [Stair Tread Installation Instructions](#)
- [Luminance Contrast Information](#)
- [Slip Resistant Testing Information](#)
- [Code Compliance Information](#)
- [Colour Range Information](#)
- [Fire Test Information](#)
- [Adhesive Technical Data Sheet](#)
- [Full Product Catalogue](#)
- [Maintenance Guide](#)
- [Photo Gallery](#)
- [Warranty](#)