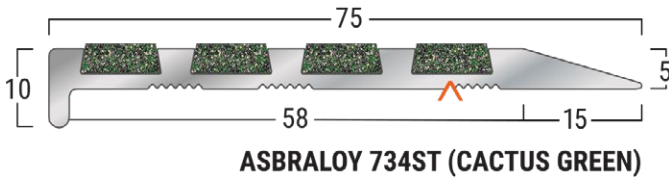
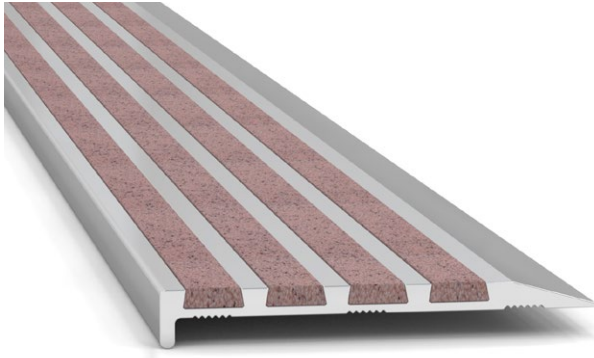


Latham Asbraloy™ Aluminium ST Surface Mounted Safety Stair Tread Nosing Data Sheet TYPE-734ST



▲ - Denotes Factory Drilling Location



Sparkling Black
(Standard)
LRV: 28.9



Smoke
LRV: 41.58



Terracotta
LRV: 34.18



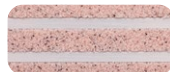
Teal
LRV: 31.19



Buff
LRV: 40.81



Blue
LRV: 32.01



Plum
LRV: 40.62



Blue Grey
LRV: 37.11



Teak
LRV: 35.75



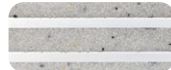
Brown
LRV: 32.75



Silver Grey
LRV: 37.70



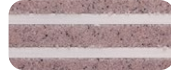
Cactus Green
LRV: 36.16



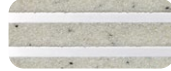
Off White
LRV: 50.17



Safety Yellow
LRV: 41.14



Rose
LRV: 47.10



Lumo Luminescent
Glow-In-The-Dark
LRV: 51.62

PRODUCT DETAILS - 734ST

Surface mounted stair tread nosings are designed for existing and new applications. The nosing can be installed over the substrate and the tapered profile ensures there is no tripping hazard. The stair tread nosings can be installed on most flooring finishes including stone, concrete, tile, terrazzo, timber, pavers, brick, carpet and vinyl.

FEATURES

- P5 Slip Classification.
- Super hard wearing.
- Abrasive Silicon Carbide Mineral Insert.
- 16 insert colours available.
- Luminance Reflective Value (LRV).
- Available factory curved.
- UV Stable.

MATERIALS

Standard Supply: Cut to site required lengths, complete with countersunk holes, stainless steel screws and plastic plugs, or in full 4600mm lengths.
Aluminium: 6063-T5, ASTM B221, Mill Finish.
Inserts: Suregrip™ Sparkling Black (standard) Silicon Carbide Mineral Inserts, or Supagrit™ Coloured Silicon Carbide Mineral Inserts.

COMPLIANCE

- AS 1428.1 2009 compliant.
- **Wet Slip Test:** Mean British Pendulum (SRV) Classification - **P5**
- **Oil Wet Ramp Test:** Slip Resistant Acceptance Group - **R12**
- Tested to Australian Standard ISO 9239 Reaction to Fire Test for Flooring.

FURTHER TECHNICAL SPECIFICATIONS

- [Website Link - PDF and DWG Details](#)
- [Stair Tread Installation Instructions](#)
- [Luminance Contrast Information](#)
- [Slip Resistant Testing Information](#)
- [Code Compliance Information](#)
- [Colour Range Information](#)
- [Fire Test Information](#)
- [Adhesive Technical Data Sheet](#)
- [Full Product Catalogue](#)
- [Maintenance Guide](#)
- [Photo Gallery](#)
- [Accessories Guide](#)
- [Warranty](#)