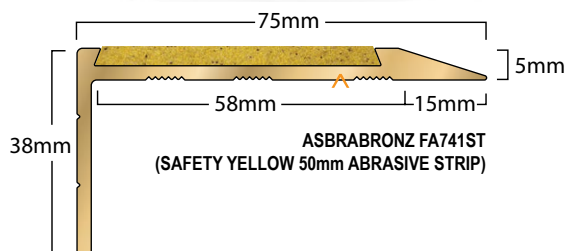
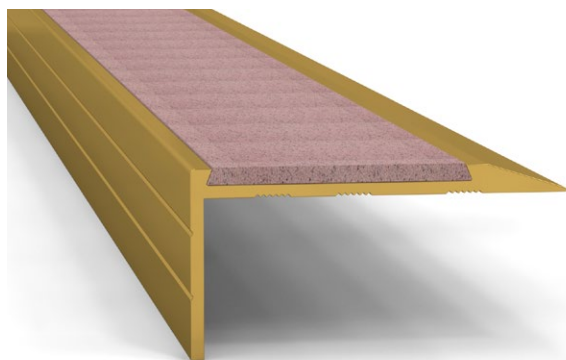


# Latham Asbrabronz™ Brass ST Surface Mounted Safety Stair Tread Nosing Data Sheet

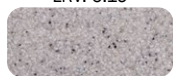
## TYPE-BFA741ST



△ - Denotes Factory Drilling Location



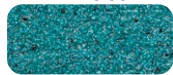
Brown  
(Standard)  
LRV: 6.19



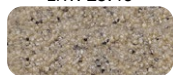
Smoke  
LRV: 25.93



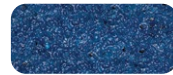
Terracotta  
LRV: 8.33



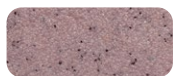
Teal  
LRV: 15.49



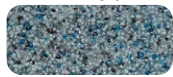
Buff  
LRV: 21.15



Blue  
LRV: 7.51



Plum  
LRV: 18.57



Blue Grey  
LRV: 16.71



Teak  
LRV: 12.31



Sparkling Black  
LRV: 4.45



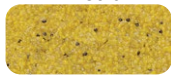
Silver Grey  
LRV: 18.17



Cactus Green  
LRV: 11.58



Off White  
LRV: 35.67



Safety Yellow  
LRV: 22.69



Rose  
LRV: 30.32



Lumo Luminescent  
Glow-In-The-Dark  
LRV: 38.75

### PRODUCT DETAILS - BFA741ST

Surface mounted stair tread nosings are designed for existing and new applications. The nosing can be installed over the substrate and the tapered profile ensures there is no tripping hazard. The stair tread nosings can be installed on most flooring finishes including stone, concrete, tile, terrazzo, timber, pavers, brick, carpet and vinyl.

### FEATURES

- P5 Slip Classification.
- Super hard wearing.
- 50mm Visual Contrast Strip of Full Abrasive Silicon Carbide Mineral Insert.
- 14 insert colours available.
- Luminance Reflective Value (LRV).
- Available factory curved.
- UV Stable.

### MATERIALS

**Standard Supply:** Cut to site required lengths, complete with countersunk holes, stainless steel screws and plastic plugs, or in full 4600mm lengths.  
**Brass:** Alloy 380 UNS - C38010, Mill Finish.  
**Inserts:** Supagrit™ (Standard - Brown) Silicon Carbide Mineral Inserts.

### COMPLIANCE

- NCC Compliant.
- AS 1428.1-2021 compliant.
- **Wet Slip Test:** Mean British Pendulum (SRV) Classification - **P5**
- **Oil Wet Ramp Test:** Slip Resistant Acceptance Group - **R12**
- Tested to Australian Standard ISO 9239 Reaction to Fire Test for Flooring.

### FURTHER TECHNICAL SPECIFICATIONS

- [Website Link - PDF and DWG Details](#)
- [Stair Tread Installation Instructions](#)
- [Luminance Contrast Information](#)
- [Slip Resistant Testing Information](#)
- [Code Compliance Information](#)
- [Colour Range Information](#)
- [Fire Test Information](#)
- [Adhesive Technical Data Sheet](#)
- [Full Product Catalogue](#)
- [Maintenance Guide](#)
- [Photo Gallery](#)
- [Accessories Guide](#)
- [Warranty](#)