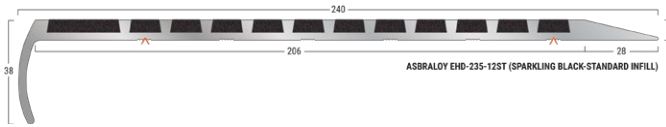
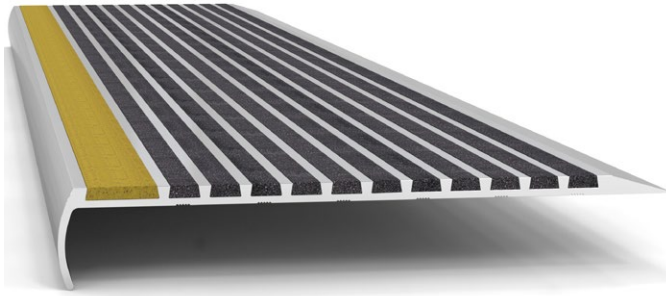


Latham EHD Repair Tread System Data Sheet

TYPE-EHD-235-12ST



A - Denotes Factory Drilling Location



PRODUCT DETAILS - EHD-235-12ST

The Latham Extra Heavy Duty (EHD) Repair Tread System is designed to provide complete versatility. The interchangeable varying width extension sections can be used to completely cover steps and landings without the need for matching floor materials and will be safe and elegant for years to come.

FEATURES

- P5 Slip Classification.
- Super hard wearing.
- Abrasive Silicon Carbide Mineral Insert.
- 16 insert colours available.
- Luminance Reflective Value (LRV).
- UV Stable.

MATERIALS

Standard Supply: Cut to site required lengths, complete with countersunk holes, stainless steel screws and plastic plugs, or in full 4600mm lengths.
Aluminium: 6063-T5, ASTM B221, Mill Finish.
Inserts: Suregrip™ Sparkling Black (standard) Silicon Carbide Mineral Inserts, or Supagrit™ Coloured Silicon Carbide Mineral Inserts.

COMPLIANCE

- **Wet Slip Test:** Mean British Pendulum (SRV) Classification - **P5**
- **Oil Wet Ramp Test:** Slip Resistant Acceptance Group - **R12**
- Tested to Australian Standard ISO 9239 Reaction to Fire Test for Flooring.

FURTHER TECHNICAL SPECIFICATIONS

- [Website Link - PDF and DWG Details](#)
- [Stair Tread Installation Instructions](#)
- [Luminance Contrast Information](#)
- [Slip Resistant Testing Information](#)
- [Code Compliance Information](#)
- [Colour Range Information](#)
- [Fire Test Information](#)
- [Adhesive Technical Data Sheet](#)
- [Full Product Catalogue](#)
- [Maintenance Guide](#)
- [Photo Gallery](#)
- [Accessories Guide](#)
- [Warranty](#)