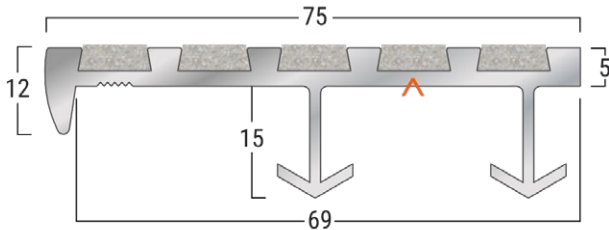


Latham SK, SHD & WAK-Wing Cast-In Place Safety Stair Tread Nosings Data Sheet

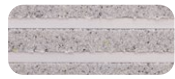
TYPE-765SK



ASBRALLOY 765SK (OFF WHITE)



Sparkling Black
(Standard)
LRV: 28.9



Smoke
LRV: 41.58



Terracotta
LRV: 34.18



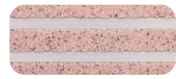
Teal
LRV: 31.19



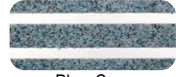
Buff
LRV: 40.81



Blue
LRV: 32.01



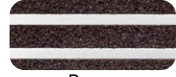
Plum
LRV: 40.62



Blue Grey
LRV: 37.11



Teak
LRV: 35.75



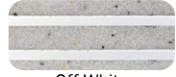
Brown
LRV: 32.75



Silver Grey
LRV: 37.70



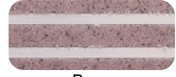
Cactus Green
LRV: 36.16



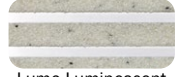
Off White
LRV: 50.17



Safety Yellow
LRV: 41.14



Rose
LRV: 47.10



Lumo Luminescent
Glow-In-The-Dark
LRV: 51.62

PRODUCT DETAILS - 765SK

Latham Asbraloy SK, SHD and WAK-Wing Cast-In Place Safety Stair Nosings are designed for new applications where pedestrian safety and stair longevity is of particular concern. The systems can be installed into the wet concrete topping. All SK, SHD and WAK-Wing Series Cast-In Place Safety Stair Nosings are suitable for internal or external applications and are available with a wide range of insert colours.

FEATURES

- P5 Slip Classification.
- Super hard wearing.
- Abrasive Silicon Carbide Mineral Insert.
- 16 insert colours available.
- Luminance Reflective Value (LRV).
- UV Stable.

MATERIALS

Standard Supply: Cut to site required lengths, or in full 4600mm lengths.

Aluminium: 6063-T5, ASTM B221, Mill Finish.

Inserts: Suregrip™ Sparkling Black (standard) Silicon Carbide Mineral Inserts, or Supagrit™ Coloured Silicon Carbide Mineral Inserts.

COMPLIANCE

- **Wet Slip Test:** Mean British Pendulum (SRV) Classification - **P5**
- **Oil Wet Ramp Test:** Slip Resistant Acceptance Group - **R12**
- Tested to Australian Standard ISO 9239 Reaction to Fire Test for Flooring.

FURTHER TECHNICAL SPECIFICATIONS

- [Website Link - PDF and DWG Details](#)
- [Stair Tread Installation Instructions](#)
- [Luminance Contrast Information](#)
- [Slip Resistant Testing Information](#)
- [Code Compliance Information](#)
- [Colour Range Information](#)
- [Fire Test Information](#)
- [Adhesive Technical Data Sheet](#)
- [Full Product Catalogue](#)
- [Maintenance Guide](#)
- [Photo Gallery](#)
- [Accessories Guide](#)
- [Warranty](#)