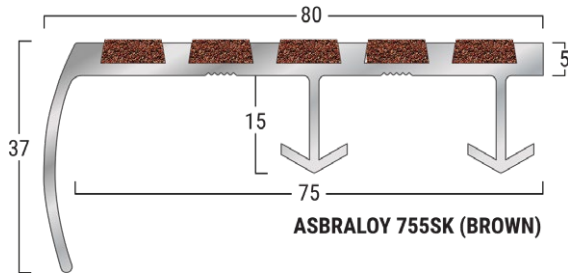
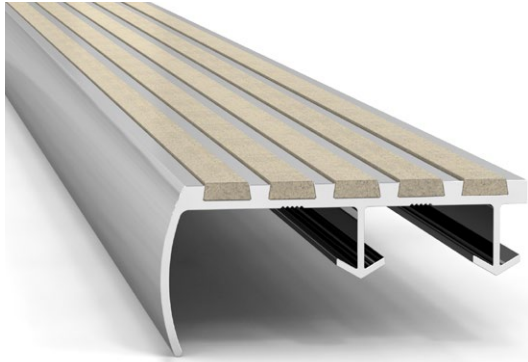


# Latham SK, SHD & WAK-Wing Cast-In Place Safety Stair Tread Nosings Data Sheet

## TYPE-755SK



Sparkling Black  
(Standard)  
LRV: 28.9



Smoke  
LRV: 41.58



Terracotta  
LRV: 34.18



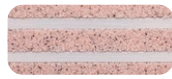
Teal  
LRV: 31.19



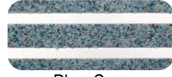
Buff  
LRV: 40.81



Blue  
LRV: 32.01



Plum  
LRV: 40.62



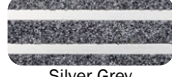
Blue Grey  
LRV: 37.11



Teak  
LRV: 35.75



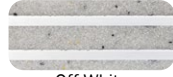
Brown  
LRV: 32.75



Silver Grey  
LRV: 37.70



Cactus Green  
LRV: 36.16



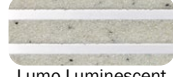
Off White  
LRV: 50.17



Safety Yellow  
LRV: 41.14



Rose  
LRV: 47.10



Lumo Luminescent  
Glow-In-The-Dark  
LRV: 51.62

### PRODUCT DETAILS - 755SK

Latham Asbraloy SK, SHD and WAK-Wing Cast-In Place Safety Stair Nosings are designed for new applications where pedestrian safety and stair longevity is of particular concern. The systems can be installed into the wet concrete topping. All SK, SHD and WAK-Wing Series Cast-In Place Safety Stair Nosings are suitable for internal or external applications and are available with a wide range of insert colours.

### FEATURES

- P5 Slip Classification.
- Super hard wearing.
- Abrasive Silicon Carbide Mineral Insert.
- 16 insert colours available.
- Luminance Reflective Value (LRV).
- UV Stable.

### MATERIALS

**Standard Supply:** Cut to site required lengths, or in full 4600mm lengths.

**Aluminium:** 6063-T5, ASTM B221, Mill Finish.

**Inserts:** Suregrip™ Sparkling Black (standard) Silicon Carbide Mineral Inserts, or Supagrit™ Coloured Silicon Carbide Mineral Inserts.

### COMPLIANCE

- **Wet Slip Test:** Mean British Pendulum (SRV) Classification - **P5**
- **Oil Wet Ramp Test:** Slip Resistant Acceptance Group - **R12**
- Tested to Australian Standard ISO 9239 Reaction to Fire Test for Flooring.

### FURTHER TECHNICAL SPECIFICATIONS

- [Website Link - PDF and DWG Details](#)
- [Stair Tread Installation Instructions](#)
- [Luminance Contrast Information](#)
- [Slip Resistant Testing Information](#)
- [Code Compliance Information](#)
- [Colour Range Information](#)
- [Fire Test Information](#)
- [Adhesive Technical Data Sheet](#)
- [Full Product Catalogue](#)
- [Maintenance Guide](#)
- [Photo Gallery](#)
- [Accessories Guide](#)
- [Warranty](#)