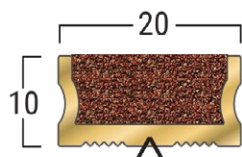


# Latham Asbrabronz™ Brass Recess Mounted Safety Stair Tread Nosing Data Sheet

## TYPE-BCS-20



**ASBRABRONZ  
BCS-20 (BROWN  
-STANDARD INFILL)**

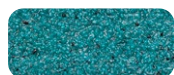
Λ - Denotes Factory Drilling Location  
When Specified



Brown  
(Standard)  
LRV: 6.19



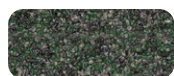
Terracotta  
LRV: 8.33



Teal  
LRV: 15.49



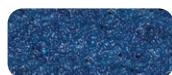
Buff  
LRV: 21.15



Cactus Green  
LRV: 11.58



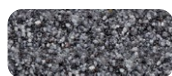
Blue Grey  
LRV: 16.71



Blue  
LRV: 7.51



Sparkling Black  
LRV: 4.45



Silver Grey  
LRV: 18.17



Off White  
LRV: 35.67



Safety Yellow  
LRV: 22.69



Teak  
LRV: 12.31



Lumo Luminescent  
Glow-In-The-Dark  
LRV: 38.75

### PRODUCT DETAILS - BCS-20

Latham safety inserts provide slip resistant protection for pedestrians, building occupants and owners. Safety stair inserts highlight the leading edge of the step, or make ramps or flat surfaces safe. These metal supported products are recommended for installation in rebated or preformed grooves in granite, marble, terrazzo, concrete and timber treads.

### FEATURES

- P5 Slip Classification
- Super hard wearing.
- Full Abrasive Silicon Carbide Mineral Insert.
- 13 insert colours available
- Luminance Reflective Value (LRV)
- Available factory curved
- UV Stable

### MATERIALS

**Standard Supply:** Cut to site required lengths, complete with countersunk holes, stainless steel screws and plastic plugs, or in full 4600mm lengths

**Brass:** Alloy 380 UNS - C38010, Mill Finish

**Inserts:** Supagrit™ (Standard - Brown) Silicon Carbide Mineral Inserts.

### COMPLIANCE

- **Wet Slip Test:** Mean British Pendulum (SRV) Classification - **P5**
- **Oil Wet Ramp Test:** Slip Resistant Acceptance Group - **R12**
- Tested to Australian Standard ISO 9239 Reaction to Fire Test for Flooring.

### FURTHER TECHNICAL SPECIFICATIONS

- [Website Link - PDF and DWG Details](#)
- [Stair Tread Installation Instructions](#)
- [Luminance Contrast Information](#)
- [Slip Resistant Testing Information](#)
- [Code Compliance Information](#)
- [Colour Range Information](#)
- [Fire Test Information](#)
- [Adhesive Technical Data Sheet](#)
- [Full Product Catalogue](#)
- [Maintenance Guide](#)
- [Photo Gallery](#)
- [Accessories Guide](#)
- [Warranty](#)

w [www.latham-australia.com](http://www.latham-australia.com)

e [sales@latham-australia.com](mailto:sales@latham-australia.com)

p +612 9879 7888