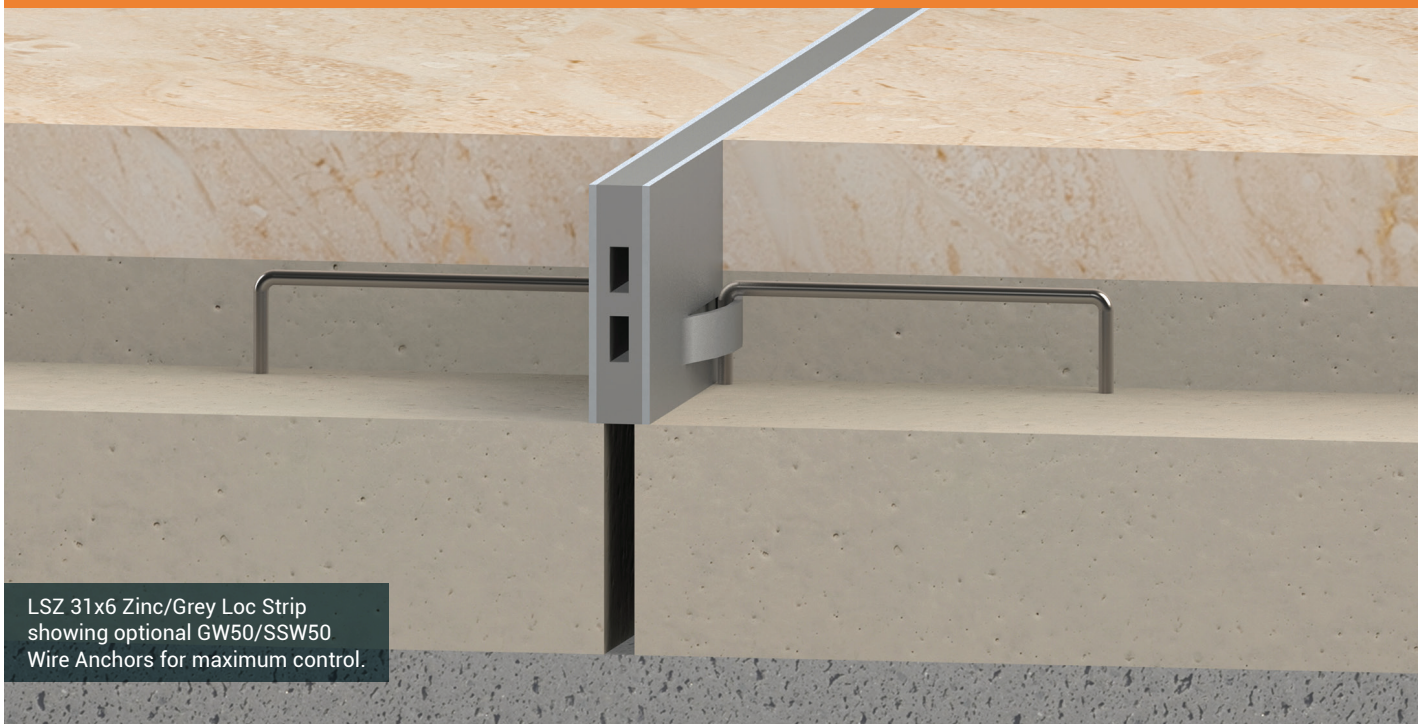


LATHAM NEOPRENE-X-PANSION LOC® STRIPS



LSZ 31x6 Zinc/Grey Loc Strip
showing optional GW50/SSW50
Wire Anchors for maximum control.

Loc® Strips 6MM NEOPRENE INSERT

The tables and information on these pages indicate some of the available 6mm Loc® Strip configurations. Illustrations show some of the colour combinations available for the neoprene inserts and the metal side plates.

Latham 6mm Neoprene-X-Pansion Loc® Strips are generally used in interior applications where the expected thermal expansion of the floor finish would be considered less than an external application. They are also suitable for external applications, however the bay sizes or distance between the strips will need to be reduced (see pages 4-6 for further set out and spacing details).

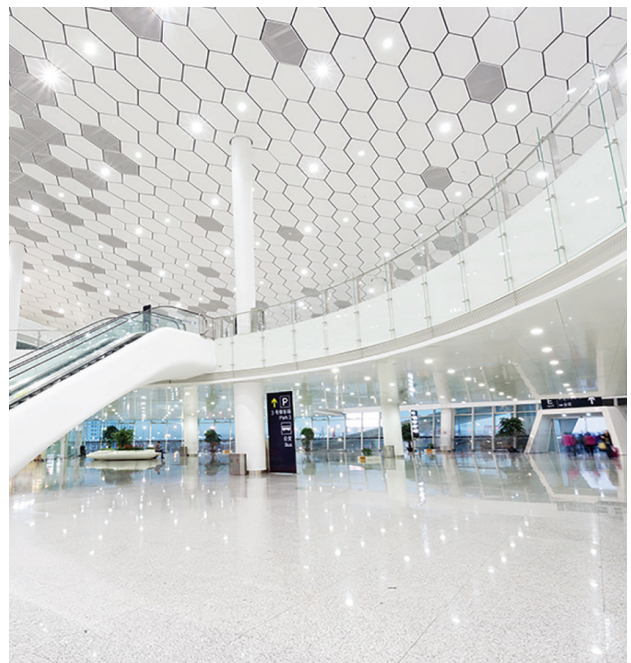
Latham 6mm Neoprene-X-Pansion Loc® Strips with 1mm Brass and Zinc and 0.7mm Stainless Steel side plates are intended to be used in all hard flooring applications and are designed to be installed in conjunction with wet bedded flooring applications (see pages 52-53 for further installation details).

Latham 6mm Neoprene-X-Pansion Loc® Strips are supplied in standard 1800mm lengths and should be installed so as to minimise the frequency of butt joints and short lengths. Also 3-way and 4-way butt joint intersections should be avoided (see page 54 for further details).

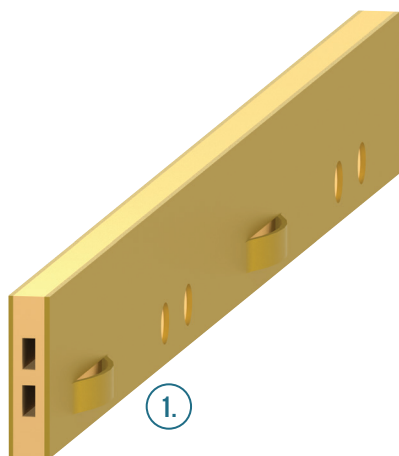
All Latham Neoprene-X-Pansion Loc® Strips are designed specifically for use with optional GW50/SSW50

Wire Anchors for maximum control. For further information and specification details, see page 55 or for full details visits our website www.latham-australia.com.

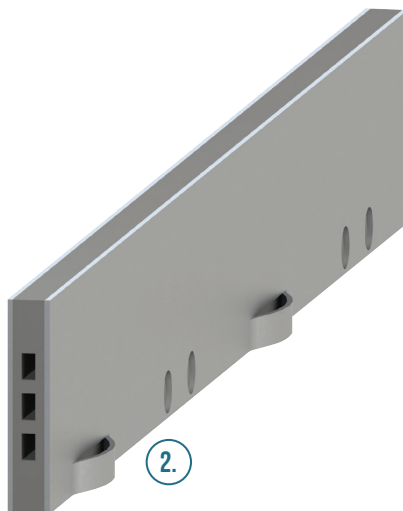
Latham Neoprene-X-Pansion Loc® Strips should be installed in all locations of stress concentration; at changes in direction; wherever localised movement is anticipated and around rigid and fixed large objects such as columns, stair and lift wells, light posts, across driveways, at access covers, across doorways and anywhere that may impede expansion and contraction of the floor finish.



6MM NEOPRENE INSERT



1.



2.



3.



WIRE ANCHORS

Optional galvanised GW50 or stainless steel SSW50 (external application) auxiliary wire anchors.

1. LSB 31X6 BRASS/BUFF
2. LSZL 40X6 ZINC/GREY LIMITED CONTROL LOW LOOP
3. LSS 50X6 STAINLESS STEEL/BLACK

GENERAL PRODUCT INFORMATION

- Supplied in standard lengths of 1800mm.
- Loc® Strips are specifically designed for use with optional GW50/SSW50 Wire Anchors for maximum control.
- Product profile illustrations approximately 66% full size.

6MM WIDE NEOPRENE-X-PANSION LOC STRIP PROFILE GUIDE

Specify Neoprene Colour & Wire Anchors

Brass (1mm thick side plates)	Zinc (1mm thick side plates)	Stainless Steel (0.7mm thick side plates)	Overall Product Depth	Accommodates Paving Maximum Thickness (with GW-50/SSW-50 wire anchors in place)
LSB-22 x 6	LSZ-22 x 6	LSS-22 x 6	22mm	8mm
LSB-31 x 6	LSZ-31 x 6	LSS-31 x 6	31mm	15mm
LSBL-40 x 6	LSZL-40 x 6	LSSL-40 x 6	40mm Low Loop	30mm
LSB-50 x 6	LSZ-50 x 6	LSS-50 x 6	50mm	35mm
LSBL-50 x 6	LSZL-50 x 6	LSSL-50 x 6	50mm Low Loop	40mm
LSB-65 x 6	LSZ-65 x 6	LSS-65 x 6	65mm	50mm
LSB-80 x 6	LSZ-80 x 6	LSS-80 x 6	80mm	65mm
LSB-90 x 6	LSZ-90 x 6	LSS-90 x 6	90mm	75mm
LSB-100 x 6	LSZ-100 x 6	LSS-100 x 6	100mm	85mm
LSB-115 x 6	LSZ-115 x 6	LSS-115 x 6	115mm	100mm

☛ Custom heights to accommodate custom floor finish thicknesses available on request

☛ Some custom metal plate thicknesses available on request

NEOPRENE INFILL COLOUR OPTIONS

BU Buff **GR** Grey **BL** Black

METAL SIDE PLATE OPTIONS

BR Brass 1mm **ZN** Zinc 1mm **SS** Stainless Steel 0.7mm