

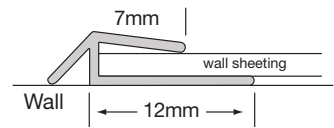
# WS Series Wall Sheeting

Latham WS Series Wall Sheeting offers a simple and aesthetically pleasing way to protect internal building thoroughfares. The material can be installed in full sheets or cut to custom sizes and installed as door panels, kick panels or push panels. The Latham Wall Sheeting is designed to protect areas of pedestrian traffic movement from scuffing and unsightly dirt and marks, whilst being easy to clean and virtually maintenance free. The textured finish on the wall sheeting provides a hard wearing, scuff and scratch resistant replaceable finish to compliment modern designs.

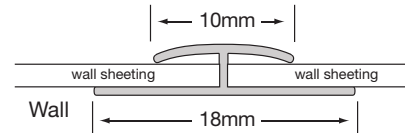
Latham WS Series Wall Sheeting has a multitude of uses and applications; it is often used as wall sheeting in hotels, airports, hospitals, clinics, schools, gyms, kindergartens and many other applications. Latham Wall Sheeting can even be installed curved for wall and column applications for diameters greater than 600mm.

Latham WS Series Wall Sheeting is available in standard sizes of 2400mm x 1200mm sheets at 2mm thick. The material is supplied for site cutting to the required sizes, which can be simply done by purchasing the specially designed WS Series hand cutting tool the 'LATSNAIP', or alternately with more care the material can be cut on a circular saw or jig with a fine tungsten carbide blade.

Latham WS Series Wall Sheeting can be adhered to most wall surfaces using the specially designed Latham Titazel Wall Grip. The material is suitable to be adhered on the wall and left as is, or colour matched edge and jointing profiles can be supplied with the Latham WS Series Wall Sheeting range. The profiles are supplied in 2400mm length and are available in the following profiles.



**Type LFS Finishing Strip**  
(vertical & horizontal)



**Type LVJS Vertical Joiner Strip**

## Type LFS Finishing Strip

The Latham LFS Finishing Strip offers a neat and effective way to start and finish the wall sheeting these can be used both vertically and horizontally.

## Type LVJS Vertical Joiner Strip

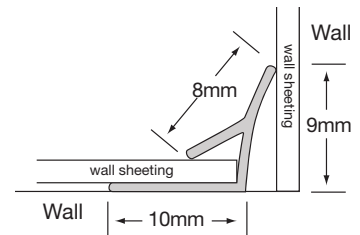
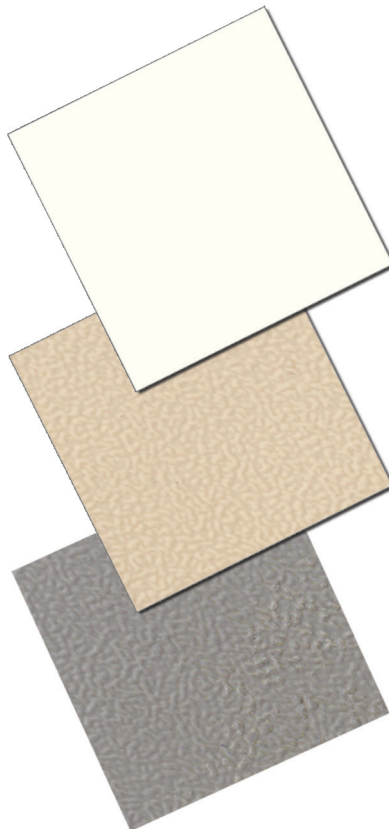
The Latham LVJS Vertical Joiner Strip, is used as a neat and presentable junction between 2 or more sheets.

## Type LICS Inside Corner

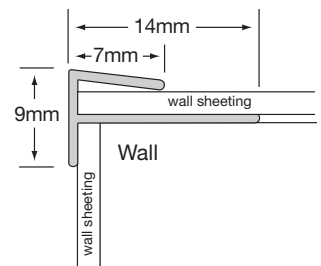
The Latham LICS Inside Corner Strip offers a neat and effective detail for internal corners, between 2 sheets.

## Type LOCS Outside Corner

The Latham LOCS Outside Corner Strip offers a neat and effective detail for external corners, between 2 sheets. We recommend that PCG and CG corner guards be considered in conjunction or in place of the LOCS Outside Corner Strip.



**Type LICS Inside Corner**



**Type LOCS Outside Corner**

The system is offered in 3 colours



Standard Specifications

Standard wall sheeting size is 2400mm x 1200mm.  
Standard wall sheeting is 2mm thick.

# The functional Solution

**Latham Hand Rails, Hand/Bump Rails, Illuminated Hand/Bump Rails, Bump Rails, Corner Guards, and Wall Protection Sheeting** are designed to provide a simple aesthetically appealing, functional solution for locations where traffic movement may be expected to cause scuffing and damage to walls and corners.

Usage examples include hospitals, schools, restaurants, offices, nursing homes, shops, passenger check in areas, hotels etc.

The textured finish that is on all the sections (excluding the BR-25) provides a hard wearing, scuff & scratch resistant replaceable finish to compliment modern designs.



## Luminance Reflective Value

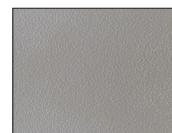
Each of the 7 samples shown indicate the approximate colour and the Luminance Reflective Value (LRV) for the Latham Wall Protection Systems product range.



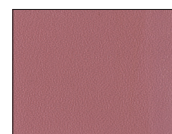
Snow White  
LVR 82



Almond Beige  
LVR 50



Hazy Grey  
LVR 21



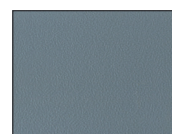
Violet  
LVR 19



Sapphire Blue  
LVR 7



Pine Green  
LVR 7



Blue Grey  
LVR 19