



LATHAM SUMO GRIP

NON-SLIP COATING

Installation & Application Instructions

Document No: LAT-SG-II-001 Revision: Rev B Issue Date: June 2026

SURFACE PREPARATION

- The surface must be clean, dry, sound and contaminant free, including dust, dirt, mould, grease, oil, curing compounds, etc.
- Use Latham Gold-Chem cleaner.

PRIMER

- Dilute Latham Primer 1:1 with water.
- Apply a thin film by sponge or microfibre mop (avoid puddling).
- Primer cures in approximately 30 minutes at room temperature.
- Porous substrates might require more primer.

P4 SLIP RATING
VERY HIGH SLIP RESISTANCE
AS 4586:2013 APPENDIX A

LATHAM NON-SLIP CLEAR SUMO GRIP™

NON-SLIP COATING
High performance anti-slip coating for expansion joint cover plates.
Water-Based • VOC-Free • Low Odour

1L CLEAR FINISH
Approximate Coverage: 4-5m² per litre depending on surface profile

PRODUCT PREPARATION

- Stir PART A thoroughly for two minutes.
- Latham Non-Slip CLEAR works with a 5:1 mixing ratio by weight. Part A is 5 and Part B is 1.
- Only mix as much product as will be immediately required.
- Use Part A and Part B by weight using a mixing cup and digital precision scale. Do not mix by volume.
- Stir mixture of Part A and Part B thoroughly with an electrical mixer for 2 minutes.
- Apply mixture within 30 minutes.

APPLICATION PROCESS

- Refer to Latham TDS for application instructions.
- Due to a wide variety of substrates, an adhesion test is recommended prior to full application.
- Theoretically spreading rate: 150 grams of the coating mixture per square metre. Coverage can be increased for high traffic areas.
- Work in sections.
- Apply a single, even layer to the surface.
- Trafficable cure time: 12+ hours.

SAFETY

- This product is classified as not hazardous according to the regulation (EC) 1272/2008 (CLP).
- This product is not classified as dangerous according to 67/548/EEC/1999/45/EEC.
- Labelling according to Safe Work Australia.
- Safety Data Sheet available upon request.

SLIP RATINGS

- Certified by CSIRO in accordance to AS4586-2013.
- Pendulum Test Slider 55 – Slip Class P4
- Pendulum Test Slider 96 – Slip Class P4
- Indicated R Rating: R12

ABOUT LATHAM SUMO-GRIP

Latham Australia is a leading manufacturer of premium architectural flooring products, including their ranges of expansion joint covers, control strips, entry mats and grids, safety stair tread nosings, tactile indicator studs and directional indicators all proudly manufactured in our Sydney facility.

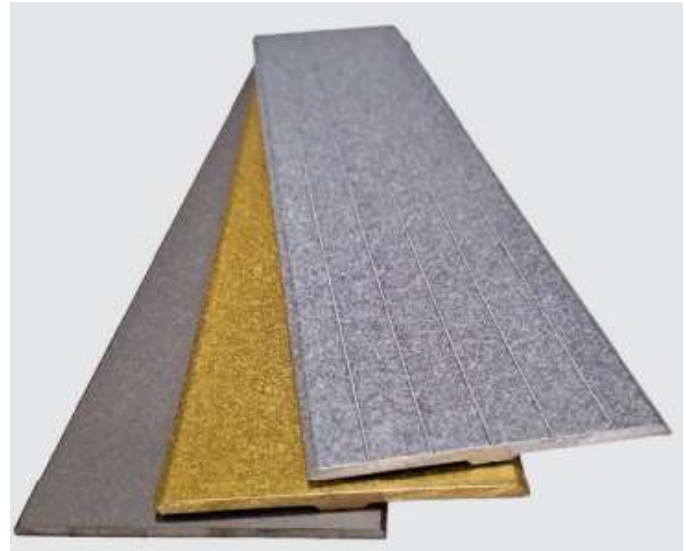
- ✓ VOC-FREE, dual component non-slip coating.
- ✓ Can be applied by roller, brush or airless spray.
- ✓ Virtually transparent finish.
- ✓ Designed to prevent slips and falls.
- ✓ UV-resistant and non-yellowing.
- ✓ Best results are achieved when Sumo-Grip is factory applied and cured.

EXPERTS IN EXPANSION JOINT SOLUTIONS | QUALITY | INNOVATION | RELIABILITY | latham-australia.com

Latham Australia Pty Ltd
14 Tennyson Rd,
Gladesville, NSW, Australia.
Ph: 1300 LATHAM(528 426) International Ph: +612 9879 7888
Email: techreq@latham-australia.com
Web: www.latham-australia.com



Latham Sumo Grip P4 Rated Non-Slip Coating is designed for installation on Latham Stainless Steel, Brass and Aluminium Cover plates. Please note: for best results, Lathams recommend Sumo Grip be factory applied at the time of initial order. The metal preparation and curing/hardening process that is available in the controlled factory environment is far superior to that which can be achieved on site. However, if the process has been overlooked at time of purchase or if the system has worn due to high traffic, site application may be the best option.



Latham Sumo Grip is a water-based, VOC-free coating. Consult the Material Safety Data Sheet and any precautionary labelling on containers. As with any chemical, always use safe work practices to avoid ingestion, inhalation & prolonged repeated skin contact. After use, wash hands before smoking, eating, drinking or using toilet. Wear PPE conforming with MSDS & instructions. Use a respirator device when spray-applying. Wear protective gloves & safety goggles.

- Consult Material Safety Data Sheet before usage.
- Surface and room temperature must be at least 14 degrees C during application and curing. Do not apply in exterior situations when rain threatens. Do not apply when humidity is above 85%.
- Practical spreading rates will vary depending on such factors as method and conditions of application, surface roughness and porosity.
- Thoroughly clean area using a solvent based cleaner and clean off any solvent with water, ensuring the cover plates are thoroughly dry before proceeding.

Applying Latham Sumo Grip to the metal cover plates on site can be challenging due to the smoothness of the plates. To enhance adhesion, the use of the primer is essential, but we also recommend sanding the metal surface first. We would suggest a 400 to 800 grit pad be used to assist with creating a key on the plate.

Latham Australia Pty Ltd
14 Tennyson Rd,
Gladesville, NSW, Australia.
Ph: 1300 LATHAM(528 426) International Ph: +612 9879 7888
Email: techreq@latham-australia.com
Web: www.latham-australia.com



Spray Application (for roller/brush application, see below)

Latham Sumo Grip can be applied with an airless Spray and should be applied to the cover plate only. It is a good idea to mask the sides of the expansion joint and surrounding floor to avoid the material being mistakenly applied to other parts of the joint or surrounding surfaces.

Latham Sumo Grip Primer

The standard Latham Sumo Grip Primer is a water-based acrylic primer. It appears blueish in wet conditions and translucent when dry and is suitable for use on all Latham metal cover plates.

Dilute with water on a 1:1 ratio.

Use a sponge to apply the primer to the cover plate.

Avoid puddling and skinning. The Primer will cure in about 30 minutes at room temperature. The Sumo Grip may be applied immediately after the primer has dried, and must be applied within 8 hours of primer application.

PPE for Spraying

- Read MSDS prior to use.
- Wear PPE conforming to MSDS, and product label.
- HALF FACE RESPIRATOR, suitable for painting/coating/spraying is essential, as are goggles/enclosed eye protection.



Preparation

- Cover floor and other sensitive surfaces with drop sheets.
- Mask or cover the expansion joint parts (and surrounding areas) that are not being coated to avoid overspray which could affect the movement of the joint. Alternatively, remove the cover plate altogether, to apply coating in a suitably clean & ventilated area. This will allow several plates to be treated at once, and they can be placed on trestles or a table, making the working height easier than applying the coating directly at floor level. Additionally, use cardboard as protection when spraying near or along walls.
- Choose an appropriate area to mix the coating & use a drop sheet to avoid spilling material.

Latham Australia Pty Ltd

14 Tennyson Rd,

Gladesville, NSW, Australia.

Ph: 1300 LATHAM(528 426) International Ph: +612 9879 7888

Email: techreq@latham-australia.com

Web: www.latham-australia.com



Tools

- Electronic precision scale
- Spray gun
- Mixing cups
- Electric drill
- Large drill head for Part A
- Smaller drill head to mix both components
- Bucket with water for clean up
- Cloth or paper towels
- Paint tray



Coating Preparation

- Thoroughly stir Sumo Grip Part A before use, with an electrical mixer for at least 5 minutes. Make sure to mix in any material sitting at the bottom of the bucket.
- Part A needs to be mixed every time, prior to use.

Mixing Sumo Grip Components A and B

Part A and B should always be mixed together using an electrical mixer. Do not mix by shaking or manual stirring. This will not get a proper mix and can cause quality issues, such as partial curing, poor chemical and mechanical resistance, etc.

Mixing Ratio: 5 to 1

For every 5 parts of Part A, add 1 part of Part B. When you divide 1 by 5 you get 0.2. Thus, you add 20% Part B to the amount of Part A you have added to your mixing cup. Follow one of these two calculations.

1. Multiply Part A by 1.2. The result is the total amount of Part A and B together.
2. Multiply Part A by 0.2. This is the amount of Part B you will need to add to Part A.

Latham Australia Pty Ltd

14 Tennyson Rd,

Gladesville, NSW, Australia.

Ph: 1300 LATHAM(528 426) International Ph: +612 9879 7888

Email: techreq@latham-australia.com

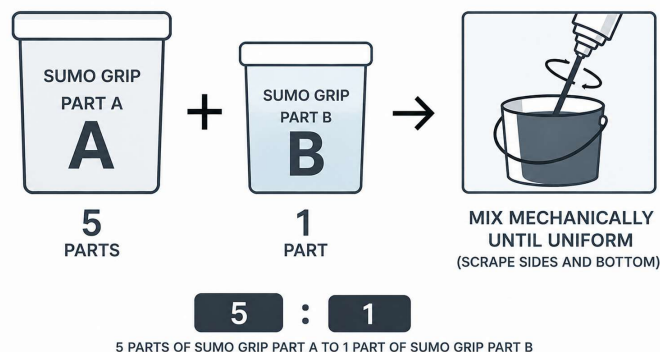
Web: www.latham-australia.com



Only mix as much coating as will be immediately required. Once coating has been mixed, apply within 60 minutes.

- Place mixing cup on precision scale and turn on.
- Pour Part A in your mixing cup to the required weight.
- Add the required amount of Part B to make the total weight required.
- Thoroughly stir mixture with your small mixing head.

This method ensures that Part B will be added in the right amount



Mixing Example 1

- Part A in your mixing bucket = 400 grams
- Multiply 400 x 1.2. Result: 480
- Add Part B until you reach 480 grams on the scale (you have added 80 grams of Part B)

Dilute Mixture for Spray Application

To be able to spray-apply the Latham Sumo Grip, your prepared Part A and B mixture needs to be diluted with approx. **4.5%** water by weight. Make sure to first mix Part A and B together with the electrical mixer. Only then can you add water.

Mixing Example 1 (for spraying)

- Part A in your mixing bucket = 400 grams
- Multiply 400 x 1.2. Result: 480
- Add Part B until you reach 480 grams (you have added 80 grams of Part B)
- Mix thoroughly with an electric mixer

Latham Australia Pty Ltd

14 Tennyson Rd,

Gladesville, NSW, Australia.

Ph: 1300 LATHAM(528 426) International Ph: +612 9879 7888

Email: techreq@latham-australia.com

Web: www.latham-australia.com



Dilute mixture with 4.5% water

- Part A and B mixture is 480 grams
- Multiply $1.045 \times 480 = 501.6$ grams OR $0.045 \times 480 = 21.6$ grams
- Add 22 grams of water to the mixture of Part A and B
- Mix thoroughly with an electric mixer

Application Coverage

By thinning the coating for spray application, the spreading rate will be affected. This means you will have to compensate and apply more material to the surface.

Increase coverage rate to at least 120 grams per m²

- Compensate for external conditions like wind. Apply more material when wind is strong.
- Adjust for specific spray guns as their coverage rate and output will differ. Trial your spray gun first, with sample applications to see coverage. Calculate and see if your application delivers at least 120 grams per m².

Working out the area (m²) of the cover plates Sumo Grip is being Applied to.

Depending on the model of the expansion joint cover which the P4 Rated Sumo Grip is being applied to, the length may be 3000mm or 4000mm, or it may be cut to a site-specific length for installation. Most Latham cover plates are supplied at 3050mm. It is important to measure.

Example 1.

Measure the length of the cover plate (say 3050mm); we have 10 covers to treat...

Measure the width of the cover plate (say 200mm)

10 plates @ 3050mm (3.05m) long x 200mm wide (0.2m) = 6.1m²

To cover this area at 120g/ m² you need 6.1×120 grams of coating mixture = 732g, say 740g.

You would prepare at least 780g of mixture, being 650g Part A and 130g Part B, before dilution.

Latham Australia Pty Ltd

14 Tennyson Rd,

Gladesville, NSW, Australia.

Ph: 1300 LATHAM(528 426) International Ph: +612 9879 7888

Email: techreq@latham-australia.com

Web: www.latham-australia.com



Problems from applying a thin coat

- Desired slip-rating is not achieved
- Wear significantly increases
- Chemical resistance is reduced
- To overcome these issues, ensure you are meeting the m² requirement by weight and/or consider applying 2 coats.

Spray Applicator Selection

Latham Sumo Grip can be applied with units such as:

- Graco FinishPro HVLP Pro Contractor.
- Wagner Spray systems
- Ozito Spray Systems
- Conventional spray guns. With a 1.2-1.6mm nozzle and 3 Bar of air pressure.
- **Note:** Any filters or strainers should be removed from application cup or paint gun bottle.

Application process

1. Practical spreading rates will vary, depending on such factors as method, spray gun, over-spray, and conditions of applications and surface roughness. Apply at least 120 grams per m² to the surface. Compensate for windy conditions and other external influences.
2. Hold spray gun at a distance of about 20cm from the surface.
3. Start spraying in the upper left corner of the surface and move in one steady line to the other side. Release the trigger before the end of the strike. Move down, pull the trigger and continue spraying back to the left without stopping. Continue this process until the complete surface is covered.
4. Use a quick movement when Material Flow is fully open. Use a slower movement when Material Flow is at medium or apply a cross layer.

Latham Australia Pty Ltd

14 Tennyson Rd,

Gladesville, NSW, Australia.

Ph: 1300 LATHAM(528 426) International Ph: +612 9879 7888

Email: techreq@latham-australia.com

Web: www.latham-australia.com

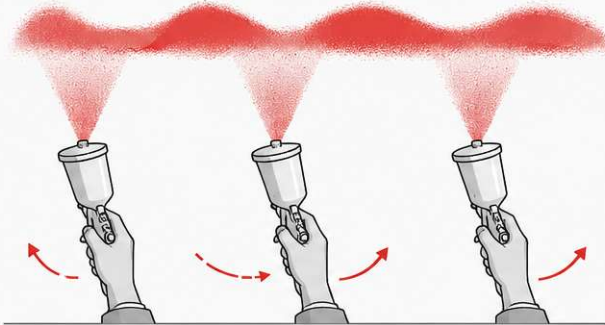


SPRAY GUN TECHNIQUE – SMOOTH, EVEN FINISH



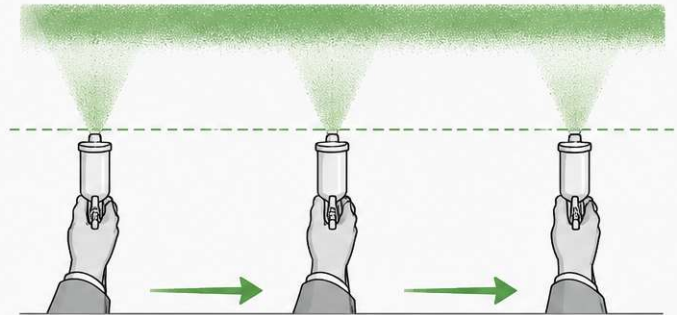
UNEVEN FINISH

Pivoting the wrist while spraying causes uneven coverage.



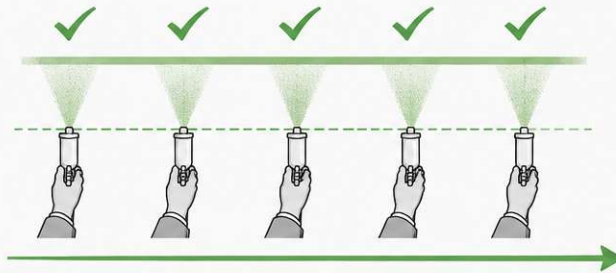
EVEN FINISH

Keep your arm steady and move your body for a consistent, even finish.



CONSISTENT SPEED

Move the spray gun at a steady, uniform speed to ensure even coverage without runs or thin spots.



TOO FAST



TOO SLOW



Hold gun perpendicular to the surface



Maintain consistent distance



Overlap each pass by 50%



Use even, parallel passes

Latham Australia Pty Ltd

14 Tennyson Rd,

Gladesville, NSW, Australia.

Ph: 1300 LATHAM(528 426) International Ph: +612 9879 7888

Email: techreq@latham-australia.com

Web: www.latham-australia.com

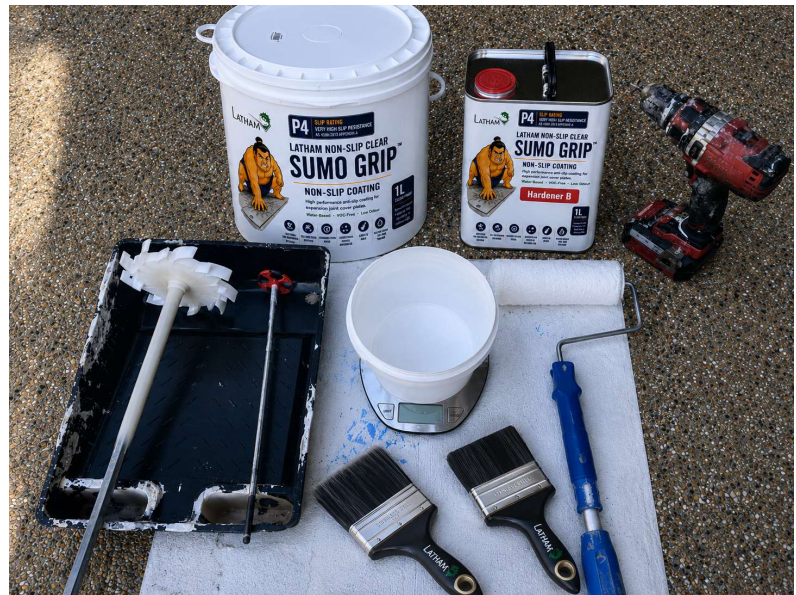


Roller/Brush Application (for spray application, see above)

For the best non-slip finish and result, use mid Nap rollers in sizes: 5, 7.5, 10, 18 and 25cm..

When brushing Latham Sumo Grip, use a high quality brush. Sumo Grip is water based and can easily be washed out of rollers or brushes with water when application is finished (but don't let Sumo Grip dry on the roller or brush, or you will have to throw it away)

- Always use a clean paint tray, roller or brush.
- Make sure to let the roller absorb sufficient material prior to starting the application.
- Avoid coating dripping from the roller.



Application Method

- Always start in the middle of the plate and apply one line by rolling or brushing away from you.
- Roll out the first strike over surface of the section.
- Spread the coating over the section. Make sure to get 100% coverage.
- **Finish the application by rolling or brushing in one direction** (away from you) without applying pressure to the surface.
- Finish all sections in the same rolling or brushing direction. Variations in sheen may happen when finishing in an opposite direction.

Latham Australia Pty Ltd

14 Tennyson Rd,

Gladesville, NSW, Australia.

Ph: 1300 LATHAM(528 426) International Ph: +612 9879 7888

Email: techreq@latham-australia.com

Web: www.latham-australia.com



Tips

- Avoid rolling or brushing back into finished sections. This will cause a double layer which can cure translucent and with a rougher finish.
- Avoid application to surfaces in direct sunlight when the cover plate is warmer than 25 degrees Celsius. Preferable application method in direct sunlight in hot conditions is by sprayer, but if the cover seems warm to touch do not apply Sumo Grip, apply the material in the shade or remove the cover and apply indoors after allowing time to cool.

Again, for best results, Lathams recommend Sumo Grip is factory applied and not applied on site. Our quality-controlled environment, metal cleaning and preparation procedures, controlled spraying and heat cure processes are far superior to anything that can be achieved on site.

For further information, contact Lathams using the details below.