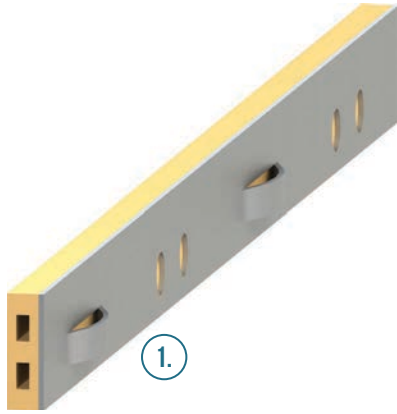


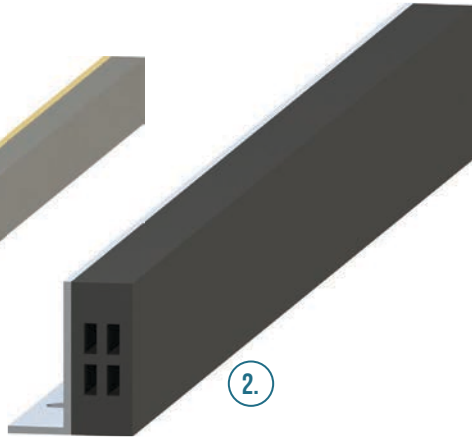
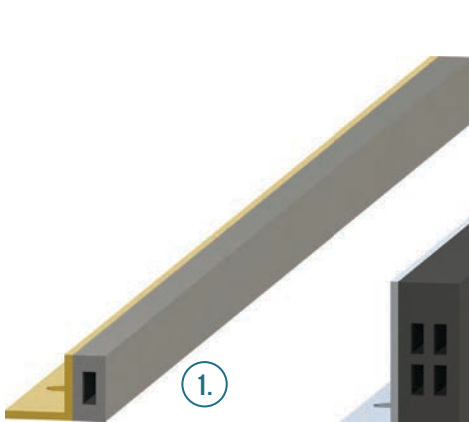
CUSTOM MADE NEOPRENE-X-PANSION LOG & TILE STRIPS

FWLS FOR FLOOR TO WALL AND FLOOR TO COLUMN APPLICATIONS



- 1. FWLS 22X6 ZINC/BUFF
- 2. FWLS 50X12 BRASS/BLACK

FWTS FOR FLOOR TO WALL AND FLOOR TO COLUMN APPLICATIONS



- 1. FWTS 12X6 BRASS/GREY
- 2. FWTS 30X12 ZINC BLACK

FS1LS DESIGNED FOR NEW TO EXISTING APPLICATION

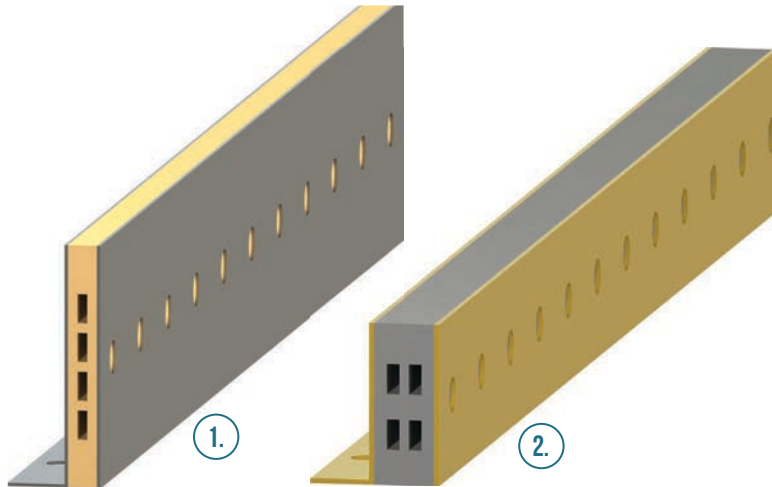


- 1. FS1LS 22X6 ZINC/GREY
- 2. FS1LS 31X12 BRASS/BUFF

6MM AND 12MM NEOPRENE INSERTS



FS1TS DESIGNED FOR NEW TO EXISTING APPLICATION



1. FS1TS 50X6 STAINLESS STEEL/BUFF
2. FS1TS 32X12 BRASS/GREY



GENERAL PRODUCT INFORMATION

- ▶ All Loc® Strips and Tile Strips supplied in standard lengths of 1800mm.
- ▶ Loc® Strips are specifically designed for use with optional GW50/SSW50 Wire Anchors for maximum control.
- ▶ Product profile illustrations approximately 66% full size.

CUSTOM MADE LOC® AND TILE STRIP PROFILE GUIDE

To order specify height, width, neoprene colour & metal type

Product Type	Application	Metal Finishes Available	Metal Side Plate Depth
FWLS ??x6* FWLS ??x12*	Designed for floor-to- wall and floor-to-column applications.	Available with Brass, Zinc and Stainless Steel Side Plates.	22mm, 31mm, 40mm, 50mm, 65mm, 80mm, 90mm, 100mm, 115mm.
FWTS ??x6* FWTS ??x12*	Designed for floor-to- wall and floor-to-column applications.	Available with Brass, Aluminium and Stainless Steel Side Plates.	9mm, 12mm, 15mm, 18mm, 22mm, 25mm, 42mm, 46mm.
FS1LS ??x6* FS1LS ??x12*	Designed for new to existing applications, with positive fixing in the bed, through the Loc® Strip Side Plate, whilst the other side butts against the existing finish.	Available with Brass, Zinc and Stainless Steel Side Plates.	22mm, 31mm, 40mm, 50mm, 65mm, 80mm, 90mm, 100mm, 115mm.
FS1TS ??x6* FS1TS ??x12*	Designed for new to existing applications, with positive fixing in the bed, through the Loc® Strip Side Plate, whilst the other side butts against the existing finish.	Available with Brass, Aluminium and Stainless Steel Side Plates.	20mm, 22mm, 25mm, 27mm, 32mm, 37mm, 42mm, 47mm, 52mm, 62mm, 72mm, 77mm, 82mm, 92mm, 102mm, 112mm, 127mm.

?? Denotes overall depth of the product required.

* Denotes metal type specify.

NEOPRENE INFILL COLOUR OPTIONS

BU Buff **GR** Grey **BL** Black

METAL SIDE PLATE OPTIONS

BR Brass 1mm **ZN** Zinc 1mm **AL** Aluminium 1.5mm **SS** Stainless Steel 0.7mm