

LATHAM AUSTRALIA PTY LTD  
 FAX: 61 2 9879 7666 PHONE: 61 2 9879 7888  
 EMAIL: JOINTS@LATHAM-AUSTRALIA.COM



**Neoprene-X-Pansion Loc® Strips and Tile Strips have a wearing surface compatible with that of paving**

- **Thickness of standard side plates** for Loc® Strips are 1mm brass or zinc, 0.7mm stainless steel and 3mm rebonite. Thickness of standard sideplates for tile strips are 1.5mm brass or aluminium, and 0.7mm stainless steel. These combinations give the joint a wearing surface compatible with that of the paving, eliminating uneven wear pattern previously experienced with heavy and hard metal strips. Optional 3mm thick sideplates are available for brass and zinc Loc® Strips and brass and aluminium Tile Strips.
- **Top Finishing:** All Neoprene-X-Pansion Loc® and Tile Strips have a 6mm or 12mm wide neoprene trafficable wear surface. Standard production is machine dressed in the factory so that the product as delivered may be used in finished paving and tile installations. 31mm, 40mm and 50mm Loc® Strips are designed to accommodate normal grinding and polishing on site and in this application are supplied unfinished for site finishing. Specify "*site finishing*" if required.
- **Loc® Strip metal side plates are punched and pierced** at regular 175mm intervals, forming anchoring loops along the entire length of the strip – these loops are allocated directly opposite to equalise the loading and accommodate the GW50 or SSW50 Wire Anchors.
- **Tile Strip metal sideplates are punched** at 50mm intervals forming anchoring holes for the adhesive.
- **Neoprene-X-Pansion Loc® and Tile Strips** are finished straight along the critical top viewed edge to provide a level finish to the floor, with a top edge bow tolerance of  $\pm 1$ mm per metre. This provides a neat level surface assisting the floor layer and allowing the pavement to be easily maintained.
- **Neoprene-X-Pansion Loc® and Tile Strips** are edge straightened after manufacture to eliminate edge bow, ensuring the strips will appear straight in the flooring when stored and installed correctly.

**CAUTIONARY NOTE**

The bed must be cut through to the structure directly under the Neoprene-X-Pansion Loc® and Tile Strip or the strip must be bedded over a closed cell polyethylene or similar flexible spacer to ensure free movement. Neoprene-X-Pansion Loc® and Tile Strips must not be installed over main construction joints where major movement may take place. Instead a mechanical expansion joint cover system should be installed, such as our Latham fully flexible brass, aluminium or stainless steel assemblies, which allow greater horizontal and vertical movement.

Brass side plates when incorporated in epoxy or polyester paving may cause a chemical reaction developing verdigris. Stainless steel side plates are considered unsuitable for grinding and polishing on site due to flex during grinding. Neoprene batch colours may vary.

# LATHAM ORIGINAL NEOPRENE-X-PANSION LOC® STRIPS

NXP LOC STRIPS



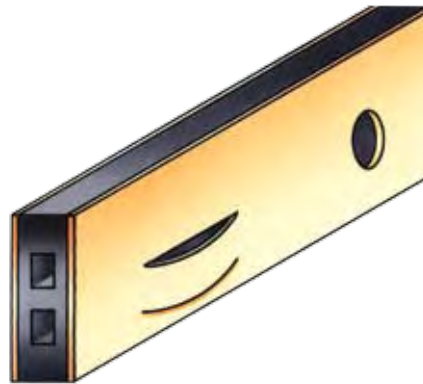
## Standard Stock & Non-Stock Neoprene-X-Pansion Loc® Strips ■ Brass, Zinc, Stainless Steel

The tables on these pages indicate some of the available Loc® Strip configurations. Illustrations show some of the colour combinations available for neoprene inserts and metal side plates.

Latham Neoprene-X-Pansion Loc® Strips are designed to be used in all hard flooring applications and are designed to be installed in conjunction with wet bedded flooring applications. See page 5-7 for further details.

Latham Neoprene-X-Pansion Loc® Strips are supplied in standard lengths of 1800mm and installed so as to minimise the frequency of butt joints and short lengths. Also 3-way and 4-way butt joint intersections should be avoided (see Page 26). Latham Neoprene-X-Pansion Loc® Strips are designed specifically for use with optional GW50/SSW50 Wire Anchors for maximum control. Further information on specification pages 20-27.

Latham Neoprene-X-Pansion Loc® Strips should be installed at all locations of stress concentration; at changes in direction; wherever localised movement is anticipated and around rigid and fixed large objects such as columns, stair and lift wells, light posts, across doorways, garden beds, manhole covers and embedded pipe work and anywhere that may impede expansion and contraction of the tiling.



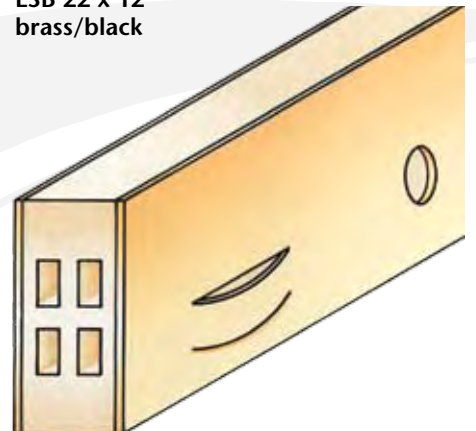
**LSB 22 x 6  
brass/black**



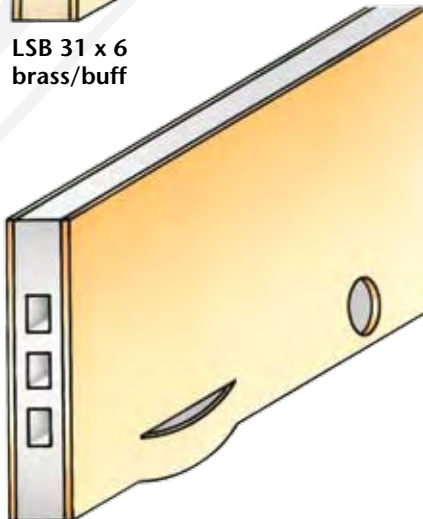
**LSB 22 x 12  
brass/black**



**LSB 31 x 6  
brass/buff**



**LSB 31 x 12  
brass/buff**



**Limited Control  
Low Loop  
LSBL 40 x 6  
brass/grey**

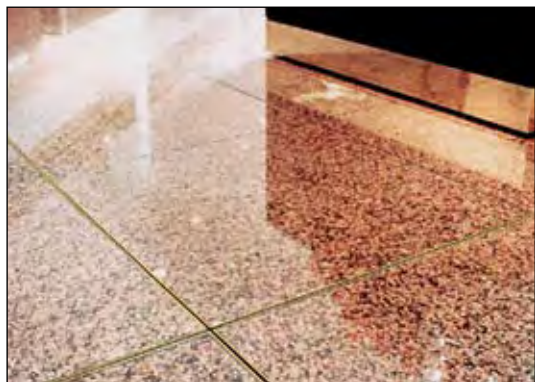


**Limited Control  
Low Loop  
LSZL 40 x 12  
zinc/black**

LATHAM AUSTRALIA PTY LTD  
FAX: 61 2 9879 7666 PHONE: 61 2 9879 7888  
EMAIL: JOINTS@LATHAM-AUSTRALIA.COM

# LATHAM ORIGINAL NEOPRENE-X-PANSION LOC® STRIPS

NXP LOC STRIPS

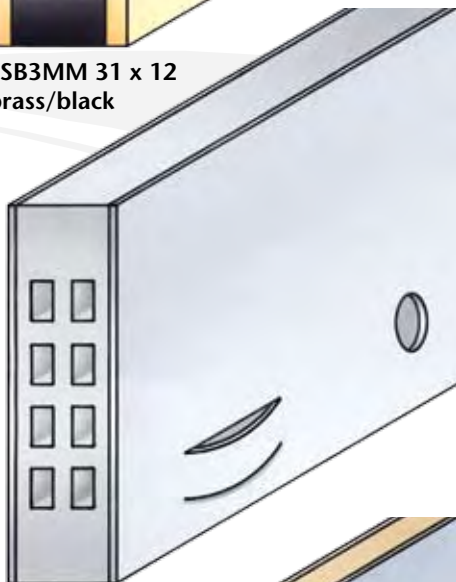


LATHAM AUSTRALIA PTY LTD  
FAX: 61 2 9879 7666 PHONE: 61 2 9879 7888  
EMAIL: JOINTS@LATHAM-AUSTRALIA.COM

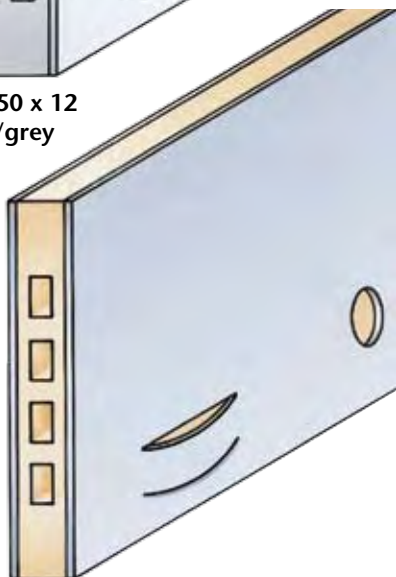
**Optional 3mm Sideplates available all brass & zinc products**



**LSB3MM 31 x 12**  
brass/black



**LSZ 50 x 12**  
zinc/grey



**LSS 50 x 6**  
stainless steel/buff

6mm Wide Neoprene-X-Pansion Loc® Strips			
Specify Neoprene Colour & Wire Anchors			
Brass	Zinc	Stainless Steel	Accommodates Paving Maximum Thickness
LSB-22 x 6	LSZ-22 x 6	LSS-22 x 6	8mm
LSB-31 x 6	LSZ-31 x 6	LSS-31 x 6	15mm
LSBL-40 x 6	LSZL-40 x 6	LSSL-40 x 6	30mm
LSB-50 x 6	LSZ-50 x 6	LSS-50 x 6	35mm
LSBL-50 x 6	LSZL-50 x 6	LSSL-50 x 6	40mm
LSB-65 x 6	LSZ-65 x 6	LSS-65 x 6	50mm
LSB-80 x 6	LSZ-80 x 6	LSS-80 x 6	65mm
LSB-90 x 6	LSZ-90 x 6	LSS-90 x 6	75mm
LSB-100 x 6	LSZ-100 x 6	LSS-100 x 6	85mm
LSB-115 x 6	LSZ-115 x 6	LSS-115 x 6	100mm

Standard neoprene colour black. Grey & buff colours available on request.

All products are supplied in 1800mm lengths.

Neoprene-X-Pansion Loc® Strips are supplied with the following metal sideplate thicknesses: standard brass & zinc products 1mm thick; stainless steel type 304 0.7mm thick (note: stainless steel products are not recommended for finish to be ground in situ).

**Optional 3mm thick brass & zinc sideplates** are also available, specify with 3mm sideplates when ordering.  
Brass: LSB3mm / Zinc: LSZ3mm



**Strips for special applications**  
Contact Latham Technical Representative

12mm Wide Neoprene-X-Pansion Loc® Strips			
Specify Neoprene Colour & Wire Anchors			
Brass	Zinc	Stainless Steel	Accommodates Paving Maximum Thickness
LSB-22 x 12	LSZ-22 x 12	LSS-22 x 12	8mm
LSB-31 x 12	LSZ-31 x 12	LSS-31 x 12	15mm
LSBL-40 x 12	LSZL-40 x 12	LSSL-40 x 12	30mm
LSB-50 x 12	LSZ-50 x 12	LSS-50 x 12	35mm
LSBL-50 x 12	LSZL-50 x 12	LSSL-50 x 12	40mm
LSB-65 x 12	LSZ-65 x 12	LSS-65 x 12	50mm
LSB-80 x 12	LSZ-80 x 12	LSS-80 x 12	65mm
LSB-90 x 12	LSZ-90 x 12	LSS-90 x 12	75mm
LSB-100 x 12	LSZ-100 x 12	LSS-100 x 12	85mm
LSB-115 x 12	LSZ-115 x 12	LSS-115 x 12	100mm

Standard neoprene colour black. Grey & buff colours available on request.